

(21) Application No: 1411531.5
 (22) Date of Filing: 27.06.2014

(51) INT CL:
 H03M 7/30 (2006.01) G06F 3/06 (2006.01)
 G06F 11/14 (2006.01) G06F 17/30 (2006.01)
 H04L 29/06 (2006.01) H04N 19/00 (2014.01)

(71) Applicant(s):
 Gurulogic Microsystems Oy
 Linnankatu 34, Turku 20100, Finland

(56) Documents Cited:
 EP 2359233 A1 EP 2256934 A1
 US 7643505 B1 US 5434568 A
 US 20130315307 A1 US 20100115137 A1

(72) Inventor(s):
 Tuomas Mikael Kärkkäinen
 Ossi Kalevo

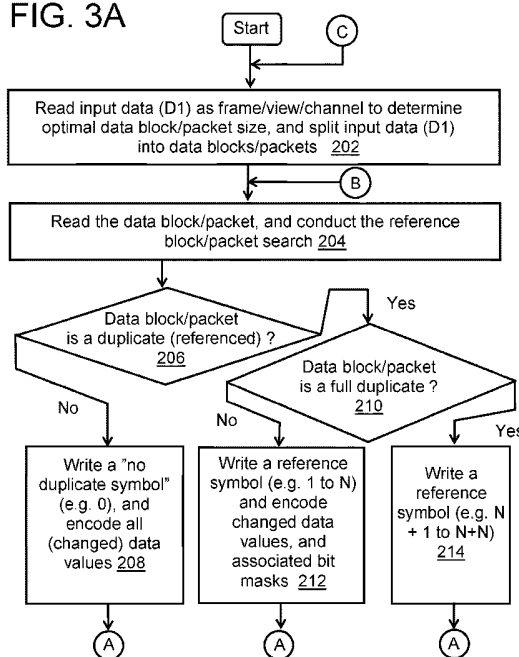
(58) Field of Search:
 INT CL G06F, G06T, H03M, H04L, H04N
 Other: WPI, EPODOC, INSPEC, TXTE

(74) Agent and/or Address for Service:
 Basck Ltd
 16 Saxon Road, CAMBRIDGE, Cambridgeshire,
 CB5 8HS, United Kingdom

(54) Title of the Invention: **Encoder, decoder and method**
 Abstract Title: **Efficient de-duplication based encoding through identifying partial re-occurrences of data**

(57) An encoder for encoding input data to generate corresponding encoded data is provided. In addition to identifying 206, 210 exact duplicates of reference blocks/packets, partial reoccurrences of data blocks or data packets within the input data are also determined 210. At least one reference value is employed to relate reoccurrences of mutually similar data blocks or data packets within the input data 212. A plurality of mask bits are employed to indicate changed and unchanged data elements of partial reoccurrences of data blocks or data packets within the input data. The at least one reference value 212, 214, the plurality of mask bits and data values of changed data elements 208 are then encoded into the encoded data. Typical de-duplication compression techniques identify exact re-occurrences of data whereas the arrangement described additionally identifies and utilises partial re-occurrences. Pointers may be used to indicate relative positions to the partially re-occurring elements of a reference block/packet. The output may be additionally encoded with further encoding such as entropy encoding. A most optimal size for the blocks/packets of the processed input data may also be determined. A corresponding method of decoding and a decoder is also described.

FIG. 3A



GB 2527607 A

1/7

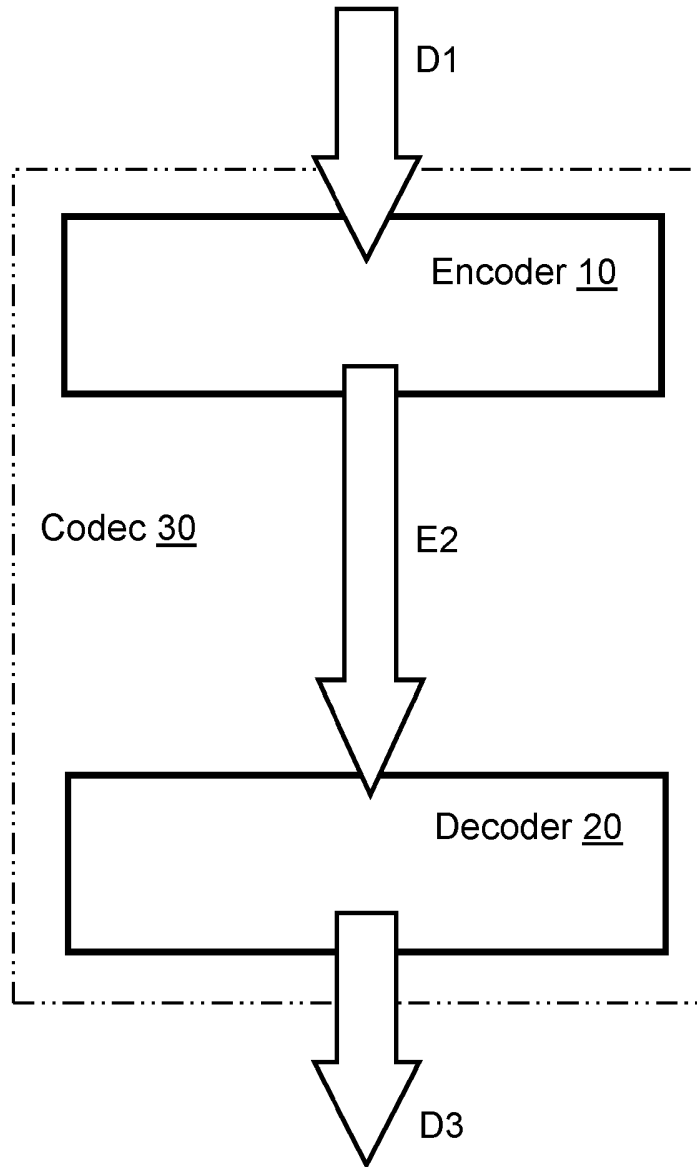


FIG. 1

2/7

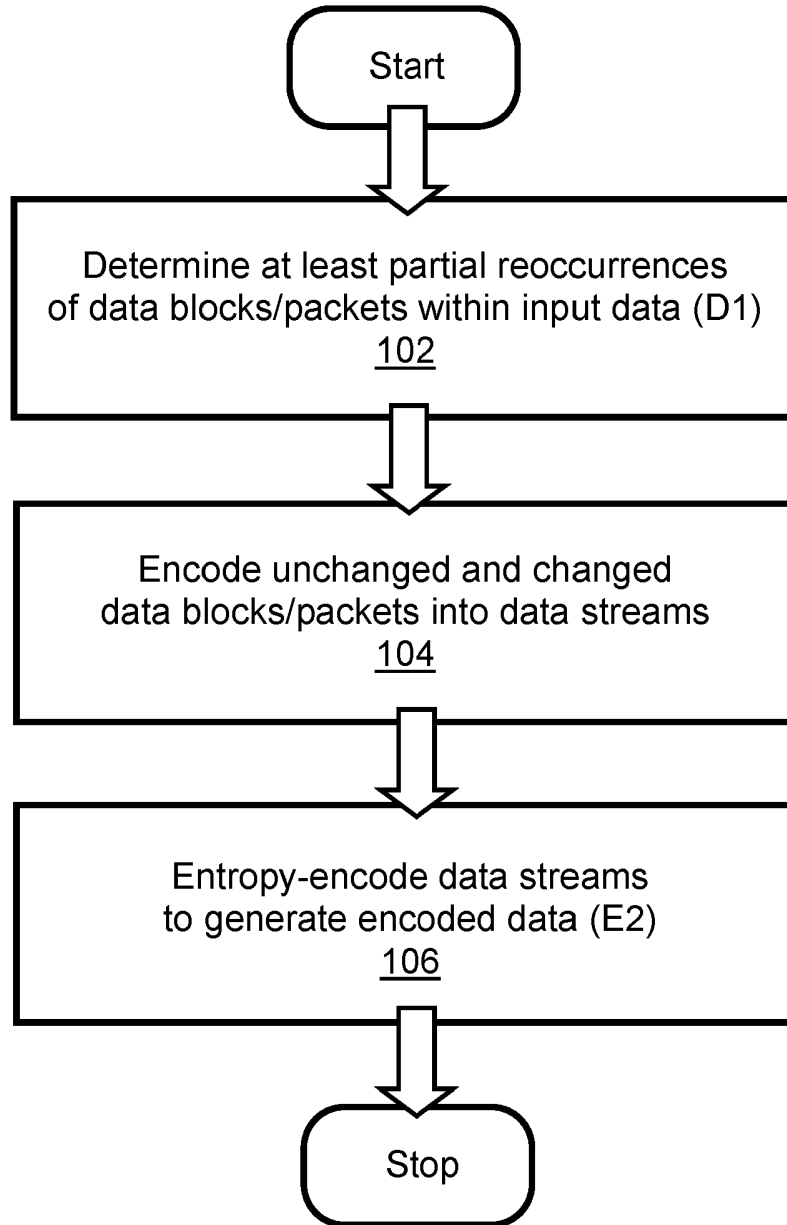


FIG. 2

3/7

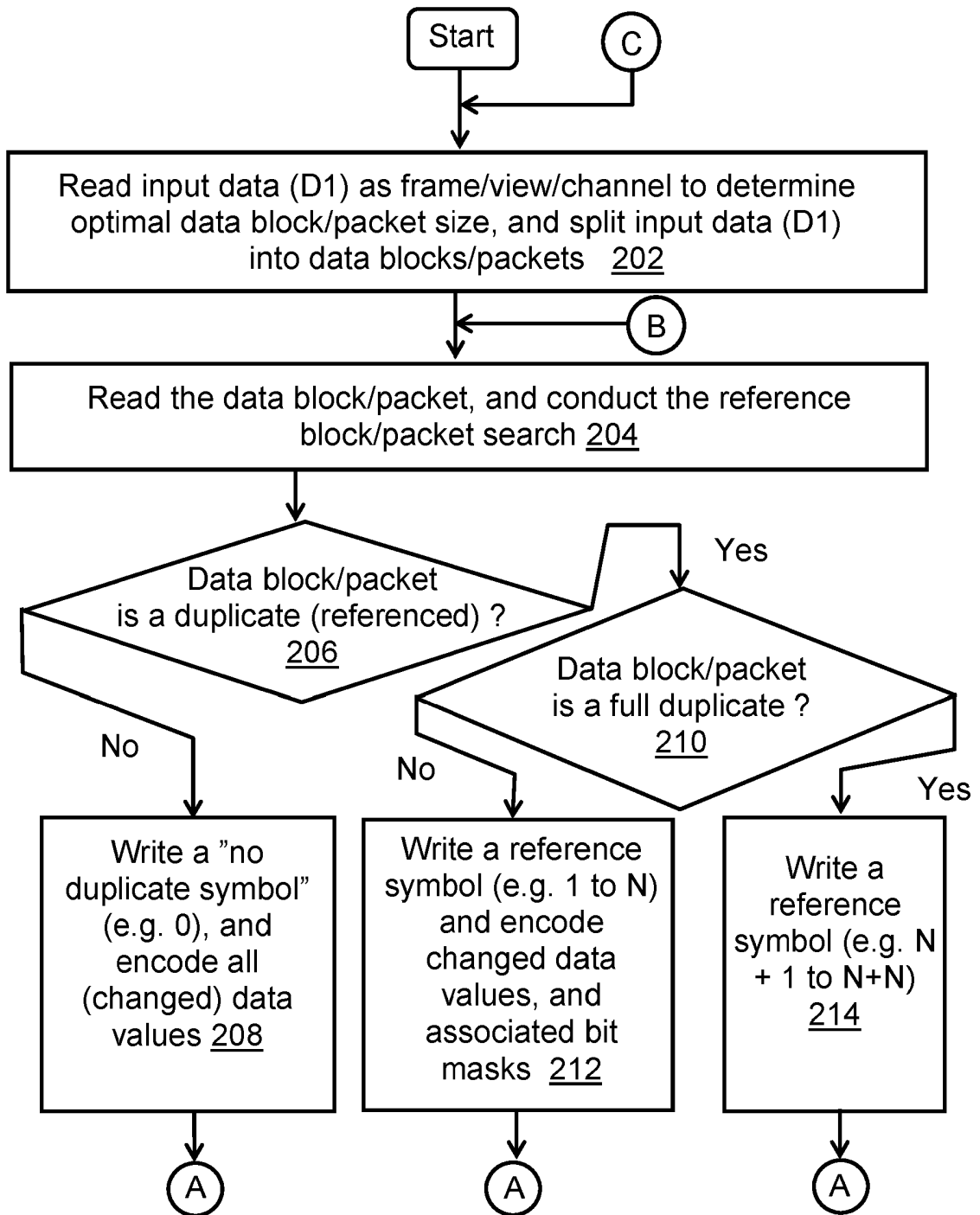


FIG. 3A

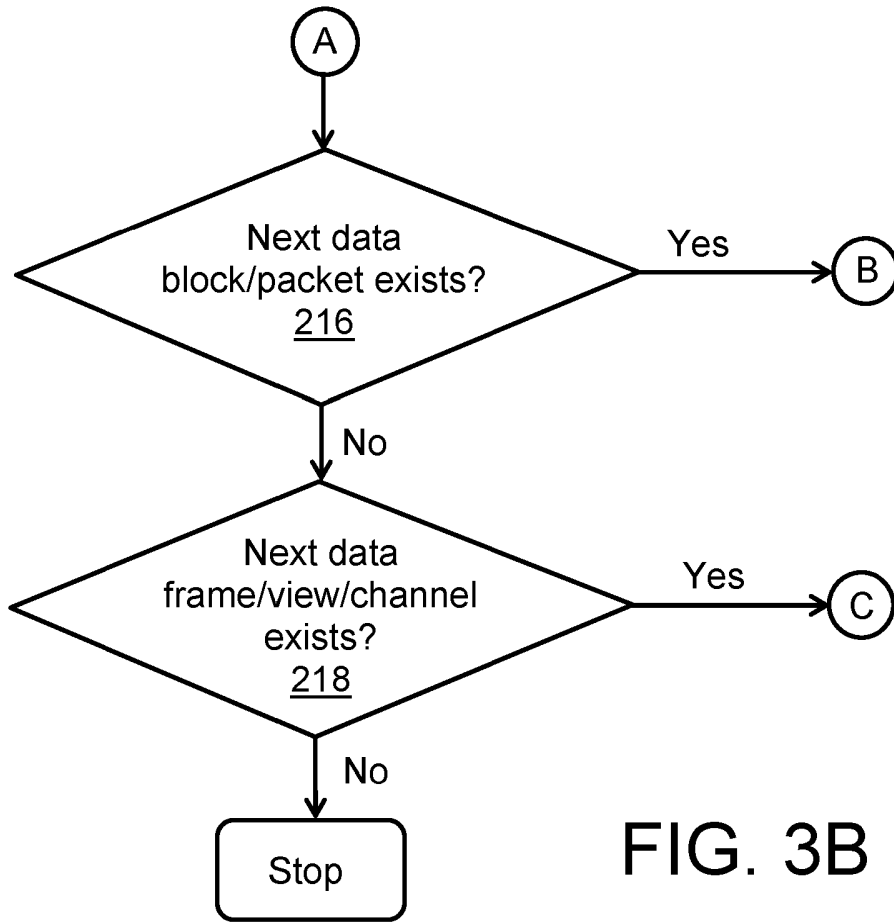


FIG. 3B

5/7

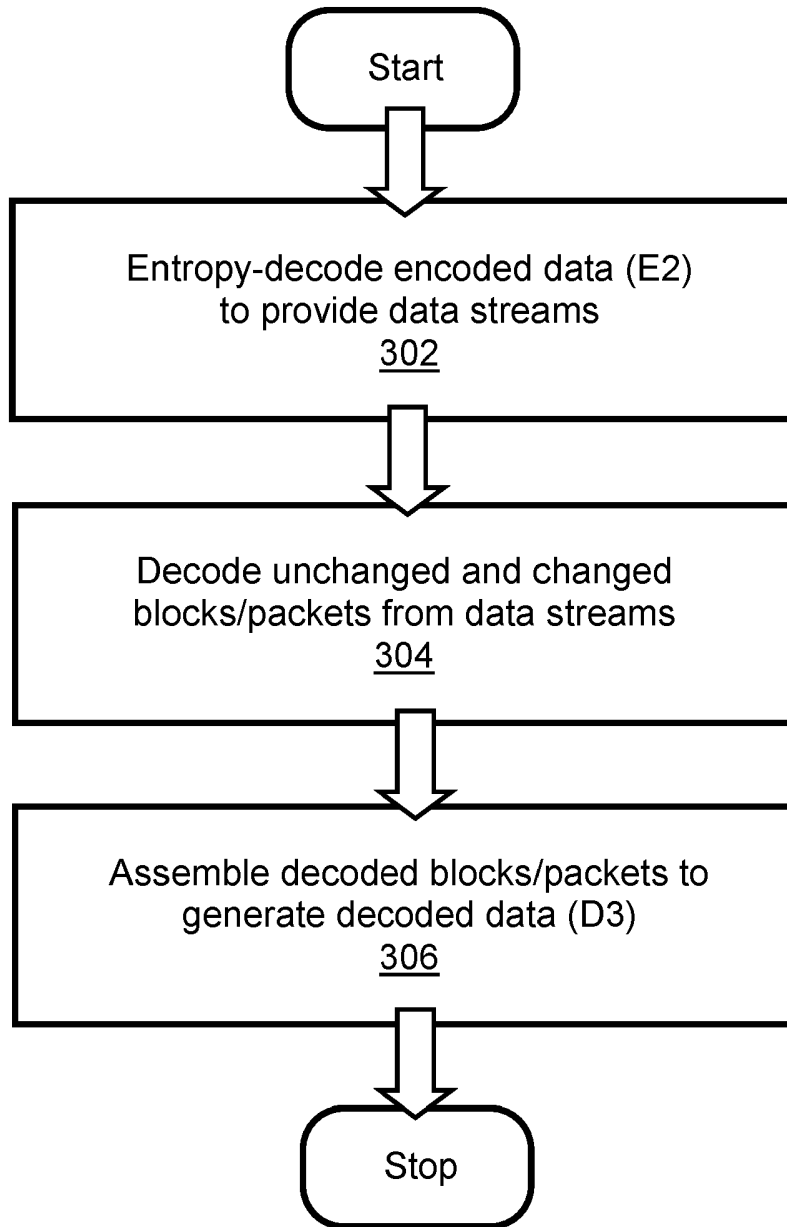


FIG. 4

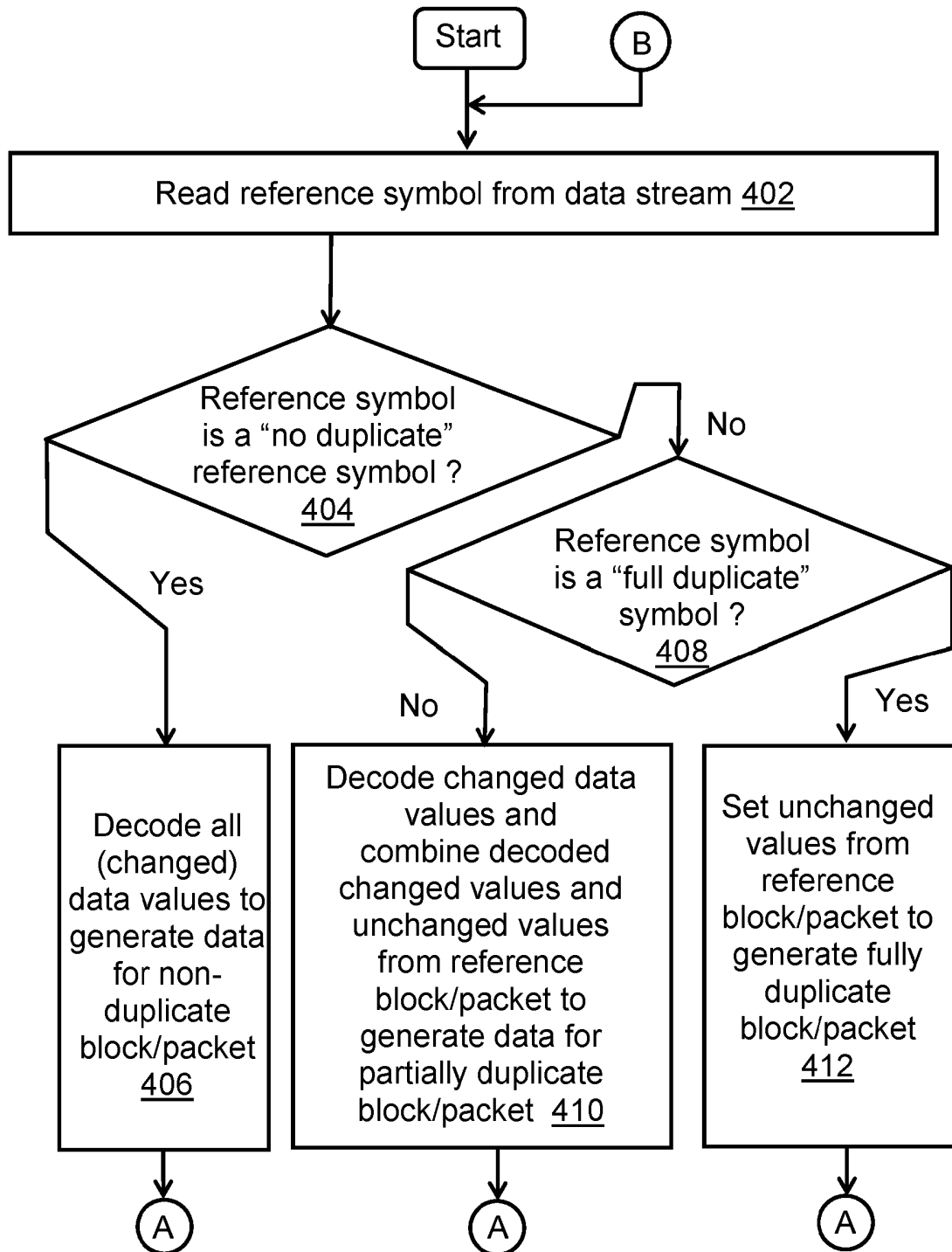


FIG. 5A

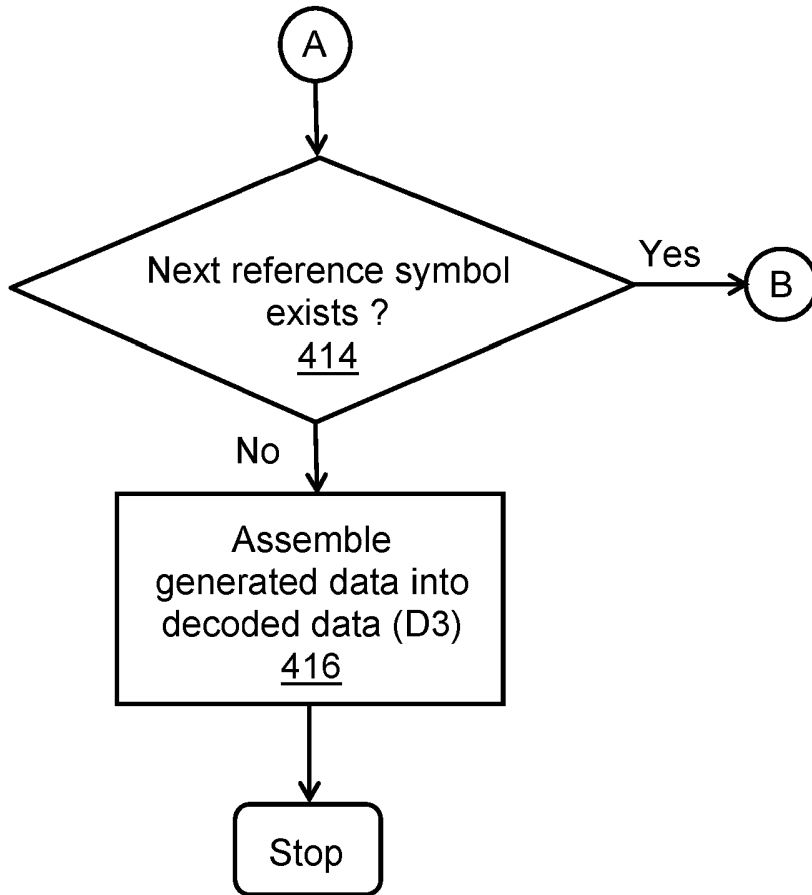


FIG. 5B



The following terms are registered trade marks and should be read as such wherever they occur in this document:

Windows Azure

ENCODER, DECODER AND METHOD

TECHNICAL FIELD

5 The present disclosure relates to encoders for encoding input data (D1) to generate corresponding encoded data (E2); the present disclosure also relates to methods of encoding input data (D1) to generate corresponding encoded data (E2). Moreover, the present disclosure concerns decoders for decoding encoded data (E2) to generate corresponding decoded data (D3); the present disclosure also concerns
10 methods of decoding encoded data (E2) to generate corresponding decoded data (D3). Furthermore, the present disclosure is concerned with computer program products comprising a non-transitory computer-readable storage medium having computer-readable instructions stored thereon, the computer-readable instructions being executable by a computerized device comprising processing hardware to
15 execute aforesaid methods. Additionally, the present disclosure concerns codecs including at least one aforementioned encoder and at least one aforementioned decoder.

BACKGROUND

Various known documents providing a technological background for the present
20 disclosure are listed in the APPENDIX associated with the present disclosure.

Generally, algorithms used to compress data are based either on a lossless compression method [3] or on a lossy compression method [4]. In lossless compression, various files, namely data (D1), are compressed in such a manner that
25 the data (D1) can later be recovered as it was originally.

Conventionally, it is known to employ data de-duplication methods [5] when encoding the data (D1), which attempt to eliminate duplicate copies of segments of data in the data (D1), namely those data segments which have not changed when they
30 repetitively reoccur when the data (D1) is, for example, temporally streamed. Known

data de-duplication methods are able to find efficiently such data blocks that are exactly similar to a desired data block.

5 Generally, known data de-duplication methods recognize previously occurring data segments by using various different methods, such as:

- (i) by detecting a number of changed data elements in a given data segment relative to a reference data segment;
- (ii) by computing a sum of absolute differences between data elements of the given data segment and the reference data segment;
- 10 (iii) by utilizing redundancy check tables; or
- (iv) by employing sliding-block methods.

Entire files can also be de-duplicated, in which case a symbol used to replace duplicate files produces an excellent compression ratio [5].

15 Moreover, data de-duplication can be executed in a post-processed manner, in which case associated data processing is performed retroactively after the data (D1) has been written. Alternatively, data de-duplication can be performed in real-time, namely just as the data (D1) enters a given system, in which case a given recognized data block is not written at all, but instead, a reference is made to an earlier data block
20 which is mutually similar to the given recognized data block.

Data de-duplication is used in various branches of contemporary information technology industry, such as in data storage and in data transfer networks. For example, data de-duplication is used in cloud services, in system backup copying
25 and in e-mail servers, wherein mutually similar files, or only slightly changed substantially mutually similar files, are transferred continuously. Moreover, in Internet communication networks, where responses to requests are sent, data bytes are transmitted back and forth, and those bytes mostly contain partly or entirely the same Internet Protocol (IP) packet data; data de-duplication is relevant to Wide Area
30 Network (WAN) Optimization, for example.

It is well-known previously that known data de-duplication methods are more cost-efficient in comparison to traditional data compression methods. However, the known data de-duplication methods suffer from several disadvantages. Firstly, the known

de-duplication methods often use considerable data memory and processing power as they attempt to achieve a desired data compression ratio. Generally, an associated search area, namely an amount of memory used to find similarities, needs to be increased to improve the data compression ratio. Moreover, CPU-intensive methods, such as a sliding search method, need to be used to improve the data compression ratio. The sliding search method seeks to identify a target data block or data packet in a raw fashion by shifting inside a search area to a direction pointed to by an algorithm employed for implementing the sliding search method.

Secondly, the known data de-duplication methods are not able to find such data blocks or data packets whose content has changed slightly, but which still contains a lot of unchanged data elements relative to the desired data block.

Thirdly, the known data de-duplication methods potentially result in data fragmentation, especially when the processing associated with these de-duplication methods is executed in real time.

SUMMARY

The present disclosure seeks to provide an improved encoder employing de-duplication techniques that are capable of providing improved encoding performance.

20

Moreover, the present disclosure seeks to provide an improved decoder employing duplication techniques that are capable of providing improved decoding performance.

In a first aspect, embodiments of the present disclosure provide an encoder for encoding input data (D1) to generate corresponding encoded data (E2). The encoder includes processing hardware for processing the input data (D1). Optionally, the processing hardware of the encoder is operable to encode the input data (D1) provided as at least one of: one-dimensional data, multi-dimensional data, audio data, image data, video data, sensor data, text data, binary data, medical data, but not limited thereto.

30

The processing hardware of the encoder is operable to determine at least partial reoccurrences of data blocks or data packets within the input data (D1). For this purpose, the processing hardware of the encoder is optionally operable to determine a most optimal size for the data blocks or data packets. Additionally, the processing hardware of the encoder is optionally operable to provide, within the encoded data (E2), information indicative of the most optimal size for the data blocks or data packets.

Moreover, the processing hardware of the encoder is operable to employ at least one reference symbol to relate reoccurrences of mutually similar data blocks or data packets within the input data (D1). In this regard, the processing hardware of the encoder is optionally operable to employ one or more pointers for indicating one or more at least partial reoccurrences of data blocks or data packets relative to their corresponding reference data block or data packet.

15

Optionally, the one or more pointers are one or more relative pointers.

Moreover, the processing hardware of the encoder is operable to employ a plurality of mask bits to indicate changed and unchanged data elements of partial reoccurrences of data blocks or data packets within the input data (D1).

20

Alternatively, optionally, the processing hardware of the encoder is operable to represent one or more unchanged data elements of a given data block or data packet by using one or more values indicative of no change, wherein the one or more values are different to those present in the input data (D1).

25

Moreover, the processing hardware of the encoder is operable to encode the at least one reference symbol, the plurality of mask bits and data values of changed data elements into the encoded data (E2). Optionally, the processing hardware of the encoder is operable to encode the at least one reference symbol, the plurality of mask bits and the data values of the changed data elements into a plurality of data streams to provide the encoded data (E2).

30

Moreover, optionally, the encoder includes an additional encoding unit for encoding at least a portion of the at least one reference symbol, the plurality of mask bits and the data values of the changed data elements into the encoded data (E2). This additional encoding unit is optionally operable to employ at least one of: entropy
5 modifying encoding, delta encoding, ODelta encoding as described in patent application GB1303661.1 filed on 1st of March 2013, 1u or 8u range encoding, Run Length Encoding (RLE), Split RLE (SRLE) as described in patent application GB130360.3 filed on 1st of March, 2013, interpolation encoding.

10 Embodiments of the present disclosure are of advantage in that the encoder is capable, by way of its approach to implementing de-duplication, of providing enhanced encoding performance.

In a second aspect, embodiments of the present disclosure provide a simple and fast
15 method of encoding input data (D1) to generate corresponding encoded data (E2).

In a third aspect, embodiments of the present disclosure provide a computer program product comprising a non-transitory (namely non-transient) computer-readable storage medium having computer-readable instructions stored thereon, the
20 computer-readable instructions being executable by a computerized device comprising processing hardware to execute the aforementioned method.

In a fourth aspect, embodiments of the present disclosure provide a decoder for decoding encoded data (E2) to generate corresponding decoded data (D3). The
25 decoder includes processing hardware for processing the encoded data (E2).

Optionally, the processing hardware of the decoder is operable to receive, within the encoded data (E2), information indicative of a size of data blocks or data packets.

30 The processing hardware of the decoder is operable to decode the encoded data (E2) to identify at least one reference symbol, a plurality of mask bits and data values of changed data elements. Optionally, the processing hardware of the decoder is operable to decode the at least one reference symbol, the plurality of mask bits and

the data values of the changed data elements from the plurality of data streams provided within the encoded data (E2).

5 Optionally, the processing hardware of the decoder is operable to decode the encoded data (E2) to identify one or more pointers indicating one or more at least partial reoccurrences of data blocks or data packets relative to their corresponding reference data packet or data block.

10 The processing hardware of the decoder is then operable to employ the at least one reference symbol, namely the one or more pointers, to generate data for at least partial reoccurrences of data blocks or data packets within the encoded data (E2).

15 Moreover, the processing hardware of the decoder is operable to employ the plurality of mask bits to generate data for changed data elements of partial reoccurrences of data blocks or data packets within the encoded data (E2).

20 Alternatively, optionally, the processing hardware of the decoder is operable to decode one or more unchanged data elements of a given data block or data packet from one or more values indicative of no change, wherein the one or more values are different to those present in the decoded data (D3).

25 Subsequently, the processing hardware of the decoder is operable to assemble the data generated for the at least partial reoccurrences of data blocks or data packets and the data generated for the changed data elements of the partial reoccurrences of data blocks or data packets, to generate the decoded data (D3).

30 Moreover, optionally, the decoder includes an additional decoding unit for decoding at least a portion of the at least one reference symbol, the plurality of mask bits and the data values of the changed data elements from the encoded data (E2). This additional decoding unit is optionally operable to employ at least one of: entropy modifying decoding, delta decoding, ODelta decoding, 1u or 8u range decoding, run length decoding, split run length decoding, interpolation decoding.

In a fifth aspect, embodiments of the present disclosure provide a simple and fast method of decoding encoded data (E2) to generate corresponding decoded data (D3).

5 In a sixth aspect, embodiments of the present disclosure provide a computer program product comprising a non-transitory (namely non-transient) computer-readable storage medium having computer-readable instructions stored thereon, the computer-readable instructions being executable by a computerized device comprising processing hardware to execute the aforementioned method.

10

In a seventh aspect, embodiments of the present disclosure provide a codec including the aforementioned encoder and the aforementioned decoder.

15 Additional aspects, advantages, features and objects of the present disclosure would be made apparent from the drawings and the detailed description of the illustrative embodiments construed in conjunction with the appended claims that follow.

20 It will be appreciated that features of the present disclosure are susceptible to being combined in various combinations without departing from the scope of the present disclosure as defined by the appended claims.

DESCRIPTION OF THE DRAWINGS

25 The summary above, as well as the following detailed description of illustrative embodiments, is better understood when read in conjunction with the appended drawings. For the purpose of illustrating the present disclosure, exemplary constructions of the disclosure are shown in the drawings. However, the present disclosure is not limited to specific methods and apparatus disclosed herein. Moreover, those in the art will understand that the drawings are not to scale. Wherever possible, like elements have been indicated by identical numbers.

30 Embodiments of the present disclosure will now be described, by way of example only, with reference to the following diagrams wherein:

- FIG. 1 is a schematic illustration of an encoder for encoding input data (D1) to generate corresponding encoded data (E2) and a decoder for decoding the encoded data (E2) to generate corresponding decoded data (D3), wherein the encoder and the decoder collectively form a codec, in accordance with an embodiment of the present disclosure;
- 5
- FIG. 2 is an illustration of steps of a method of encoding input data (D1) to generate corresponding encoded data (E2), in accordance with an embodiment of the present disclosure;
- FIGs. 3A and 3B collectively are an illustration of steps of an encoding process, in accordance with an embodiment of the present disclosure;
- 10
- FIG. 4 is an illustration of steps of a method of decoding encoded data (E2) to generate corresponding decoded data (D3), in accordance with an embodiment of the present disclosure; and
- FIGs. 5A and 5B collectively are an illustration of steps of a decoding process, in accordance with an embodiment of the present disclosure.
- 15

In the accompanying diagrams, an underlined number is employed to represent an item over which the underlined number is positioned or an item to which the underlined number is adjacent. A non-underlined number relates to an item identified by a line linking the non-underlined number to the item. When a number is non-underlined and accompanied by an associated arrow, the non-underlined number is used to identify a general item at which the arrow is pointing.

20

DETAILED DESCRIPTION OF EMBODIMENTS

The following detailed description illustrates embodiments of the present disclosure and ways in which they can be implemented. Although the best mode of carrying out the present disclosure has been disclosed, those skilled in the art would recognize that other embodiments for carrying out or practicing the present disclosure are also possible.

25

In overview, embodiments of the present disclosure are concerned with methods of processing data, and apparatus for performing such processing of data, wherein data de-duplication and duplication are performed, as will be elucidated in greater detail below.

30

Referring to FIG. 1, embodiments of the present disclosure concern:

- 5 (i) an encoder **10** for encoding input data (D1) to generate corresponding encoded data (E2), and corresponding methods of encoding the input data (D1) to generate the encoded data (E2);
- (ii) a decoder **20** for decoding the encoded data (E2) to generate corresponding decoded data (D3), and corresponding methods of decoding the encoded data (E2) to generate the decoded data (D3); and
- 10 (iii) a codec **30** including a combination of at least one encoder and at least one decoder, namely a combination of the encoder **10** and the decoder **20**.

Optionally, the decoded data (D3) is exactly similar to the input data (D1), as in a lossless mode of operation. Alternatively, optionally, the decoded data (D3) is approximately similar to the input data (D1), as in a lossy mode of operation. Yet
15 alternatively, optionally, the decoded data (D3) is different to the input data (D1), for example by way of a transformation, but retains substantially similar information present in the input data (D1); for example, the decoded data (D3) is usefully made different to the input data (D1) when reformatting of the data (D3) is also required, for example to be compatible with different types of communication platform, software
20 layer, type of communication device, and so forth.

The encoder **10** includes processing hardware for processing the input data (D1). Optionally, the processing hardware of the encoder **10** is operable to encode the input data (D1) provided as at least one of: one-dimensional data, multi-dimensional
25 data, audio data, image data, video data, sensor data, text data, binary data, medical data but not limited thereto. Optionally, the input data (D1) is received as a stream or a file. Optionally, the input data (D1) includes a lot of small variations, for example a mixture of structured details and noise.

30 The processing hardware of the encoder **10** is operable to determine at least partial reoccurrences of data blocks or data packets within the input data (D1). For this purpose, the processing hardware of the encoder **10** is optionally operable to determine a most optimal size for the data blocks or data packets, as will be elucidated in greater detail below. Additionally, the processing hardware of the

encoder **10** is optionally operable to provide, within the encoded data (E2), information indicative of the most optimal size for the data blocks or data packets.

5 In order to determine the at least partial reoccurrences of data blocks or data packets, the processing hardware of the encoder **10** is operable to employ one or more redundancy checks using one or more suitable redundancy checking methods. Optionally, a redundancy checking method is employed to select a data block or data packet that maximises a count of unchanged data elements, or minimizes a sum of absolute errors between data elements of the data block or data packet and data
10 elements of a corresponding reference data block or data packet.

Additionally, optionally, the redundancy checking method is employed to compute one or more redundancy-check values for a given data block or data packet. In an example, a single long redundancy-check value is calculated for the given data block
15 or data packet. In another example, multiple short redundancy-check values are calculated for the given data block or data packet.

If a redundancy-check value computed for the given data block or data packet does not match with any previously stored information sufficiently well, then the given data
20 block or data packet is identified as a non-duplicate data block or data packet. This non-duplicate data block or data packet is written or delivered as it is in the encoded data (E2). Additionally, optionally, the non-duplicate data block or data packet can also be inserted as a new reference data block or data packet into a stored information sequence for redundancy checking purposes.

25 Beneficially, the redundancy-check values can be computed in various ways, but a main consideration is that they should be able to distinguish non-duplicate data blocks or data packets with sufficient precision. However, it will be appreciated that it is not advantageous to waste computing resources of the processing hardware of the
30 encoder **10** by computing an unnecessarily precise redundancy-check value, if a given task can be implemented by using an optimized algorithm, which is less computation and data memory resource-intensive.

Moreover, the processing hardware of the encoder **10** is operable to employ at least one reference symbol to relate reoccurrences of mutually similar data blocks or data packets within the input data (D1). In this regard, the processing hardware of the encoder **10** is optionally operable to employ one or more pointers for indicating one or more at least partial reoccurrences of data blocks or data packets relative to their corresponding reference data block or data packet. Thus, the at least one reference symbol is employed as the one or more pointers that point to the corresponding reference data block or data packet.

Optionally, the one or more pointers are one or more relative pointers that indicate relative distances of the one or more at least partial reoccurrences of data blocks or data packets from the corresponding reference data block or data packet within the input data (D1). In other words, the one or more pointers optionally indicate positions of the one or more at least partial reoccurrences of data blocks or data packets relative to the corresponding reference data block or data packet within the input data (D1).

Optionally, the one or more pointers include reference addresses to particular locations, where information pertaining to their corresponding reference data blocks or data packets can be obtained. Optionally, the one or more pointers include reference addresses to a piece of information that needs to be used when decoding the encoded data (E2) to reconstruct the decoded data (D3). In other words, the one or more pointers point to data memory locations of their corresponding reference data blocks or data packets.

Moreover, optionally, the one or more pointers are expressed as at least one of: byte-accurate pointers, data-value-accurate pointers, word-accurate pointers, or block-accurate pointers.

Moreover, the processing hardware of the encoder **10** is operable to employ a plurality of mask bits to indicate changed and unchanged data elements of partial reoccurrences of data blocks or data packets within the input data (D1). Optionally, a mask bit associated with an unchanged data element is set to a '0' value, while a mask bit associated with a changed data element is set to a '1' value, or vice versa.

Thus, the plurality of mask bits describe which data elements are changed and which data elements are unchanged.

5 Alternatively, optionally, the processing hardware of the encoder **10** is operable to represent one or more unchanged data elements of a given data block or data packet by using one or more values indicative of no change, wherein the one or more values are different to those present in the input data (D1).

10 Moreover, the processing hardware of the encoder **10** is operable to encode the at least one reference symbol, the plurality of mask bits and data values of changed data elements into the encoded data (E2). Optionally, the processing hardware of the encoder **10** is operable to encode the at least one reference symbol, the plurality of mask bits and the data values of the changed data elements into a plurality of data streams to provide the encoded data (E2).

15

The changed data elements are written or transmitted as such if a lossless mode of operation is used. If a lossy mode of operation is used, the changed data elements are quantized.

20 If a near-lossless mode of operation is used, at least a portion of the changed data elements is quantized. For this purpose, the processing hardware of the encoder **10** is optionally operable to quantize only some portions of the changed data elements, based on an analysis of content, type and/or composition of the input data (D1). Consequently, the encoder **10** is capable of adaptively varying a data compression ratio between the input data (D1) and the encoded data (E2).

25

Moreover, the changed data elements are encoded, for example, as at least one of: original data values, quantized original data values, delta values, quantized delta values, ODelta values, or quantized ODelta values. Herein, "ODelta" refers to a differential form of encoding based upon wraparound in a binary counting regime, for example as described in patent document GB1303661.1, hereby incorporated by reference.

30

Optionally, when original values, delta values or ODelta values are used to write and deliver changed data elements with respect to a reference data block or data packet, the unchanged data elements are, for example, set to a value of "0", indicating no change, or to a value that is not otherwise present in the data. The latter option is a better solution when original values are used, but it requires delivery of the value that is not otherwise present in the data. Subsequently, a changed data element is set either to its original data value or to a delta value, namely a data value that is equal to a difference between the original data value and a corresponding data value in the reference frame, block or packet, with or without quantization. If the changed data element is set to its original data value, and that data value happens to be equal to "0", and "0" is also used to indicate unchanged data elements, then a confusion, namely a data ambiguity, potentially occurs. Therefore, the latter option is preferable to employ in embodiments of the present disclosure, namely using a data value that is not otherwise present in the data to avoid such ambiguity. Then, the data value that is used to indicate the unchanged data elements is delivered in encoded data (E2). A method described in GB1411451.6 is a good example of a method that can be used with this embodiment of the present disclosure, when a reference symbol is used to indicate the reference data block or data packet, for example some previous data block or data packet.

20

If the lossy mode of operation is used, namely a form of quantization is used, and reference symbols are simultaneously updated or added, then beneficially the processing hardware of the encoder **10** takes into account, when forming the reference blocks, those changes that de-quantization will cause to corresponding decoded data (D3). The effect of quantization is also beneficially taken into account when determining a data value to be used to indicate the unchanged data elements when changed data elements are delivered with quantized original values. When quantized delta values or quantized ODelta values are used for delivery of changed data elements, then the quantization beneficially do not change the changed values to zero when zero is used for unchanged data elements.

30

Moreover, optionally, the encoder **10** includes an additional encoding unit for encoding at least a portion of the at least one reference symbol, the plurality of mask bits and the data values of the changed data elements into the encoded data (E2).

This additional encoding unit is optionally operable to employ at least one of: entropy modifying encoding, delta encoding, ODelta encoding, 1u or 8u range encoding, Run Length Encoding (RLE), Split RLE (SRLE), interpolation encoding.

5 Furthermore, optionally, the encoder **10** is operable to communicate the encoded data (E2) to a data server and/or data storage (not shown in Fig. 1) for storing in a database (not shown in Fig. 1). The data server and/or data storage is arranged to be accessible to the decoder **20**, which is beneficially compatible with the encoder **10**, for subsequently decoding the encoded data (E2).

10

In some examples, the decoder **20** is optionally operable to access the encoded data (E2) from the data server and/or data storage.

15 In alternative examples, the encoder **10** is optionally operable to stream the encoded data (E2) to the decoder **20**, either via a communication network or via a direct connection. Moreover, it is to be noted that a device equipped with a hardware-based or software-based encoder can also communicate directly with another device equipped with a hardware-based or software-based decoder.

20 In yet other alternative examples, the decoder **20** is optionally implemented so as to retrieve the encoded data (E2) from a non-transitory (namely non-transient) computer-readable storage medium, such as a hard drive and a Solid-State Drive (SSD).

25 The decoder **20** includes processing hardware for processing the encoded data (E2).

Optionally, the processing hardware of the decoder **20** is operable to receive, within the encoded data (E2), information indicative of a size of the data blocks or data packets.

30

The processing hardware of the decoder **20** is operable to decode the encoded data (E2) to identify the at least one reference symbol, the plurality of mask bits and the data values of the changed data elements. Optionally, the processing hardware of the decoder **20** is operable to decode the at least one reference symbol, the plurality

of mask bits and the data values of the changed data elements from the plurality of data streams provided within the encoded data (E2).

5 Optionally, the processing hardware of the decoder **20** is operable to decode the encoded data (E2) to identify the one or more pointers indicating one or more at least partial reoccurrences of data blocks or data packets relative to their corresponding reference data packet or data block.

10 The processing hardware of the decoder **20** is then operable to employ the at least one reference symbol, namely the one or more pointers, to generate data for at least partial reoccurrences of data blocks or data packets within the encoded data (E2). The one or more pointers, being optionally the one or more relative pointers, enable the processing hardware of the decoder **20** to determine positions of the at least partial reoccurrences of data blocks or data packets relative to their corresponding
15 reference data packets or data blocks.

Moreover, the processing hardware of the decoder **20** is operable to employ the plurality of mask bits to generate data for changed data elements of partial reoccurrences of data blocks or data packets within the encoded data (E2).
20

Alternatively, optionally, the processing hardware of the decoder **20** is operable to decode one or more unchanged data elements of a given data block or data packet from one or more values indicative of no change, wherein the one or more values are different to those present in the decoded data (D3).
25

Subsequently, the processing hardware of the decoder **20** is operable to assemble the data generated for the at least partial reoccurrences of data blocks or data packets and the data generated for the changed data elements of the partial reoccurrences of data blocks or data packets, to generate the decoded data (D3).
30

Optionally, the decoded data (D3) is provided as at least one of: one-dimensional data, multi-dimensional data, audio data, image data, video data, sensor data, text data, binary data, medical data but not limited thereto.

Moreover, optionally, the decoder **20** includes an additional decoding unit for decoding at least a portion of the at least one reference symbol, the plurality of mask bits and the data values of the changed data elements from the encoded data (E2). This additional decoding unit is optionally operable to employ at least one of: entropy
 5 modifying decoding, delta decoding, ODelta decoding, 1u or 8u range decoding, run length decoding, split run length decoding, interpolation decoding.

Furthermore, methods of data processing that occur in the encoder **10** and the decoder **20** optionally include sub-methods as described in respect of a patent
 10 application GB1411451.6, hereby incorporated by reference, wherein the sub-methods of this patent application are provided in Table 1.

Table 1: Sub-methods employed in the encoder **10** and the decoder **20**

Use Region	Sub-method Detail
Encoder 10	A method of encoding input data (D1) to generate corresponding encoded data (E2), wherein the method includes processing the input data (D1) as data blocks and/or data packets, characterized in that the method includes: <ul style="list-style-type: none"> <li data-bbox="435 1240 1380 1330">(i) identifying substantial reoccurrences of data blocks and/or data packets within the input data (D1); <li data-bbox="435 1352 1380 1554">(ii) identifying where elements are unchanged within the substantially reoccurring data blocks and/or data packets, and/or where elements are changed within the substantially reoccurring data blocks and/or data packets; <li data-bbox="435 1576 1380 1823">(iii) encoding unchanged data elements in the encoded data (E2) by employing at least one corresponding symbol or at least one corresponding bit indicating an absence of change in the unchanged data elements relative to corresponding elements in a reference data block and/or data packet; and <li data-bbox="435 1845 1380 1868">(iv) encoding changed data elements in the encoded data (E2).
Decoder 20	A method of decoding encoded data (E2) to generate corresponding decoded data (D3), wherein the method includes

	<p>processing the encoded data (E2) as data blocks and/or data packets, characterized in that the method includes:</p> <ul style="list-style-type: none">(i) decoding the encoded data (E2) to generate data for changed data elements, the changed data elements being elements that are changed within substantial reoccurrences of data blocks and/or data packets within the encoded data (E2);(ii) decoding the encoded data (E2) to generate data for unchanged data elements, the unchanged data elements being elements that are unchanged within the substantial reoccurrences of data blocks and/or data packets within the encoded data (E2), wherein the unchanged data elements are represented by at least one corresponding symbol or at least one corresponding bit indicating an absence of change in the unchanged data elements relative to corresponding elements in a reference data block and/or data packet; and(iii) assembling the data generated for the changed and unchanged data elements in steps (i) and (ii) into data blocks and/or data packets to generate the decoded data (D3).

FIG. 1 is merely an example, which should not unduly limit the scope of the claims herein. It is to be understood that the specific designation for the codec **30** is provided as an example and is not to be construed as limiting the codec **30** to specific numbers, types, or arrangements of encoders and decoders. A person skilled in the art will recognize many variations, alternatives, and modifications of embodiments of the present disclosure.

Optionally, the codec **30** is implemented within a single device. Alternatively, optionally, the codec **30** is effectively implemented between multiple devices. In an example, the codec **30** is optionally implemented as a broadcast system, wherein there is an encoder **10** at a first spatial location and a plurality of decoders **20** at a plurality of other spatial locations.

The codec **30** can be implemented as at least one of: a data codec, an audio codec, an image codec and/or a video codec. The codec **30** is capable of compressing the input data (D1) in a pre-processing stage in real time.

5 Moreover, the codec **30** can be implemented to provide a real-time data transfer network coding method, which considerably saves bandwidth required for data transfer, especially in such systems that are based on request-response type communications, such as Hypertext Transfer Protocol (HTTP) [6] that is used in web browsers and World Wide Web (www) servers for data transfer. In addition to the
10 HTTP protocol, the Real-Time Messaging Protocol (RTMP) [7] is often used for real-time full-duplex data transfer in audio and video delivering services, and also in playback video services. Thus, the codec **30** is relevant to both HTTP-based data communication systems and RTMP-based data communication systems.

15 Moreover, optionally, the encoder **10** and the decoder **10** are operable to implement chunked transfer encoding for HTTP and/or RTMP. Optionally, the HTTP and/or RTMP employ fixed-sized data blocks and/or data packets inside requests and responses to the requests.

20 The codec **30** is especially well-suited for communication protocols that are used to transfer data blocks or data packets whose size is set exactly. For example, chunked transfer encoding used in HTTP is an optimal usage area, because requests and responses to the requests transferred in the chunked transfer encoding employ fixed-sized data blocks or data packets. As huge amounts of data are transmitted over the
25 HTTP, a considerably high data compression ratio is achieved when the encoder **10** is employed to encode input data (D1) to generate corresponding encoded data (E2).

In respect of embodiments of the present disclosure, a further benefit gained by using the HTTP is that an HTTP request/response, almost without exception,
30 contains precise information on what is being transferred and when it is being transferred. This enables selection of optimal redundancy check tables for use during encoding of the input data (D1). This potentially improves an associated data compression ratio that is achievable.

Similar to HTTP, RTMP also defines specifications regarding transfer of data blocks or data packets that have a specific defined size. On the Internet, the RTMP is often used to transfer audio, image or video information, especially in real-time communication. During a communication process, a size for a data block or data packet to be transferred is initialized at pre-set intervals according to a response time and a capacity of a transfer network employed. This potentially improves the data compression ratio that is achievable.

If transfer networks are used and a given transmitting party does not yet know whether or not an encoding method pursuant to the present disclosure is to be employed, it is possible to implement a proxy server that transforms information for a recipient of data, in which case a desired compression ratio can be achieved between a possibly slow recipient and a fast transmitter. In this scenario, the proxy server informs the recipient about unchanged data elements of at least one previously transmitted data block or data packet by sending a reference symbol along with changed data elements, and mask bits or other indication of changed and unchanged data elements in the data block or data packet to the recipient.

In an example, the proxy server is an HTTP-proxy or RTMP-proxy server, which is situated at an optimal geographical location with respect to an associated data supply service to be optimized and associated users to be served. Optionally, methods pursuant to embodiments of the present disclosure are employed to make ready-made cloud server solutions, such as Windows Azure [8], more efficient.

During the last few years (2010+), an amount of transfers of data, audio, image and video has increased so rapidly that not even Moore's Law [9] is able to follow that kind of growth. Therefore, the codec **30** is potentially very useful for making data transfers more efficient.

For illustration purposes only, there is next provided a numerical example of an encoding method as executed within the encoder **10**. In this example, the input data (D1) includes data values that might correspond to separate audio packets, separate image blocks, HTTP packet headers and so forth. The input data (D1) includes five frames/blocks/packets, wherein each frame/block/packet contains 54 data values. It

can be understood that the input data (D1) has 270 data values, for example from an 18x15 image that is split into 18x3 data blocks. This results into five data blocks, each of which has 54 data values. Alternatively, the input data (D1) can also be considered to be 270 data values from a certain data stream that is generated by a block encoder, for example as described in US patent document US 8,675,731 B2, hereby incorporated by reference, for compression purposes.

The input data (D1) includes 270 data values (entropy = 1428.35 bits \approx 179 bytes), and is represented as follows:

10

0, 12, 41, 157, 180, 29, 0, 16, 243, 42, 42, 172, 8, 0, 69, 0, 0, 40, 120, 250, 64, 0, 118, 6, 206, 99, 62, 241, 193, 52, 172, 16, 17, 60, 34, 201, 192, 220, 189, 31, 183, 3, 31, 254, 192, 146, 80, 16, 0, 254, 185, 9, 0, 0, 0, 12, 41, 157, 180, 29, 0, 16, 243, 42, 42, 172, 8, 0, 69, 0, 0, 40, 121, 13, 64, 0, 118, 6, 206, 80, 62, 241, 193, 52, 172, 16, 17, 60, 34, 201, 192, 220, 189, 31, 183, 3, 31, 254, 201, 204, 80, 16, 1, 2, 175, 204, 0, 0, 0, 12, 41, 157, 180, 29, 0, 16, 243, 42, 42, 172, 8, 0, 69, 0, 0, 40, 121, 17, 64, 0, 118, 6, 206, 76, 62, 241, 193, 52, 172, 16, 17, 60, 34, 201, 192, 220, 189, 31, 183, 3, 31, 254, 209, 65, 80, 16, 1, 2, 168, 87, 0, 0, 0, 12, 41, 157, 180, 29, 0, 16, 243, 42, 42, 172, 8, 0, 69, 0, 0, 40, 121, 25, 64, 0, 118, 6, 206, 68, 62, 241, 193, 52, 172, 16, 17, 60, 34, 201, 192, 220, 189, 31, 183, 3, 31, 254, 221, 164, 80, 16, 1, 2, 155, 244, 0, 0, 0, 12, 41, 157, 180, 29, 0, 16, 243, 42, 42, 172, 8, 0, 69, 0, 0, 40, 121, 67, 64, 0, 118, 6, 206, 26, 62, 241, 193, 52, 172, 16, 17, 60, 34, 201, 192, 220, 189, 31, 183, 3, 31, 254, 233, 149, 80, 16, 1, 2, 144, 3, 0, 0

15

20

25

The input data (D1) is optionally entropy encoded, for example to 253 bytes, by using an 8u range encoding method. By referring to such 8u range encoding, what is meant with this is a range coding method which is used for coding 8-bit data values in codec pursuant to the present disclosure. Range coding is explained here

30

: http://en.wikipedia.org/wiki/Range_coding

which is hereby incorporated by reference.

35

Now, this result includes also transmitting a probability table or a reasonably good fixed table out of currently 22 alternative fixed probability tables in codec pursuant to the present disclosure. The share of the range coded data is beneficially quite close to the entropy, namely 179 bytes in this example, if a perfect probability table were

known and there would then be a need to transmit and/or approximate with a less applicable probability table.

5 In order to determine a most optimal size for data blocks (hereinafter referred to as “*most optimal block size*”), the processing hardware of the encoder **10** operates to perform an initial run with an initial block size of seven. An Initial block size is beneficially selected to be a relatively small number, for example in a range of 3 to 8, to enable accurate detection of a most optimal block size. For example, this block
10 size of seven results in 39 data blocks as follows:

$$270 = 38 \times 7 + 4$$

wherein 38 data blocks have a size of seven data values and one last data block has
15 a size of four data values.

For a given data block, a reference symbol ‘1’ is used for a corresponding reference data block that arrives one data block before the given data block. Likewise, a reference symbol ‘2’ is used, if the reference data block arrives one data block and
20 one data value before the given data block, and so on. Thus, the reference symbol indicates a position of the reference data block relative to the given data block.

For the sake of clarity, an example 9th data block and its corresponding reference data block have been underlined and represented as follows:

25

0, 12, 41, 157, 180, 29, 0, 16, 243, 42, 42, 172, 8, 0, 69, 0, 0, 40, 120, 250, 64, 0,
118, 6, 206, 99, 62, 241, 193, 52, 172, 16, 17, 60, 34, 201, 192, 220, 189, 31, 183, 3,
31, 254, 192, 146, 80, 16, 0, 254, 185, 9, 0, 0, 0, 12, 41, 157, 180, 29, 0, 16, 243, 42,
42, 172, 8, 0, 69, 0, 0, 40, 121, 13, 64, 0, 118, 6, 206, 80, 62, 241, 193, 52, 172, 16,
30 17, 60, 34, 201, 192, 220, 189, 31, 183, 3, 31, 254, 201, 204, 80, 16, 1, 2, 175, 204,
0, 0, 0, 12, 41, 157, 180, 29, 0, 16, 243, 42, 42, 172, 8, 0, 69, 0, 0, 40, 121, 17, 64, 0,
118, 6, 206, 76, 62, 241, 193, 52, 172, 16, 17, 60, 34, 201, 192, 220, 189, 31, 183, 3,
31, 254, 209, 65, 80, 16, 1, 2, 168, 87, 0, 0, 0, 12, 41, 157, 180, 29, 0, 16, 243, 42,
42, 172, 8, 0, 69, 0, 0, 40, 121, 25, 64, 0, 118, 6, 206, 68, 62, 241, 193, 52, 172, 16,
35 17, 60, 34, 201, 192, 220, 189, 31, 183, 3, 31, 254, 221, 164, 80, 16, 1, 2, 155, 244,
0, 0, 0, 12, 41, 157, 180, 29, 0, 16, 243, 42, 42, 172, 8, 0, 69, 0, 0, 40, 121, 67, 64, 0,
118, 6, 206, 26, 62, 241, 193, 52, 172, 16, 17, 60, 34, 201, 192, 220, 189, 31, 183, 3,
31, 254, 233, 149, 80, 16, 1, 2, 144, 3, 0, 0

It will be appreciated that the actual reference data block is typically got from the decoded data, but, because this data is now coded losslessly, then also the original data values can be used for reference data blocks. As the reference data block arrives 48 data values before the example data block, a reference symbol '48' is assigned for the example data block.

The first index of the reference data block is optionally calculated, in this example, using the data-value-accurate reference indexing by using a following equation:

10

$$\text{first_index_of_reference_data_block} = \text{first_index_of_current_data_block} + \text{block_size} + \text{reference_symbol} - \text{number_of_nearest_reference}.$$

15 With this example for the 9th data block, the equation get values such as:

$$56 + 7 + 48 - 1 = 2,$$

wherein the first_index_of_current_data_block is calculated from a following equation:

20

$$\text{first_index_of_current_data_block} = (\text{number_of_current_data_block} - 1) * \text{block_size},$$

25 wherein the number_of_current_data_block is 9 and the block_size is 7, for example. The reference symbol, namely "48", of the 9th data block have been underlined also from the reference symbols after the next chapter.

It will be appreciated that a first data block does not have a corresponding reference data block, and therefore, is not assigned a reference symbol. However, the last data block is assigned its corresponding reference symbol. It will also be appreciated that the last data block is incomplete, and therefore, data values of only four first data elements of the reference data block are used to code the last data block. Thus, 38 reference symbols are assigned as follows:

30

0, 1, 0, 0, 0, 0, 0, 1, 0, 0, 0, 0, 0, 0, 0, 0, 0,
0, 0, 0, 0, 0, 0, 0, 0, 0, 0, 0, 0, 1, 1, 0, 0, 0, 0, 1, 1, 0, 0

Hereinabove, a mask bit associated with an unchanged data element is set to a '0'
5 value, while a mask bit associated with a changed data element is set to a '1' value.

The processing hardware of the encoder **10** then operates to encode data values of
the changed data elements, the mask bits associated with the changed and
unchanged data elements, and reference symbols relating partial reoccurrences of
10 mutually similar data blocks into a plurality of data streams to provide the encoded
data (E2). In the example, the plurality of data streams includes a first data stream, a
second data stream and a third data stream, as elucidated below.

The first data stream includes data values of 54 data elements of the first data block
15 and data values of 27 changed data elements in subsequent data blocks (entropy =
460.24 bits \approx 58 bytes), and is represented as follows:

0, 12, 41, 157, 180, 29, 0, 16, 243, 42, 42, 172, 8, 0, 69, 0, 0, 40, 120, 250, 64, 0,
20 118, 6, 206, 99, 62, 241, 193, 52, 172, 16, 17, 60, 34, 201, 192, 220, 189, 31, 183, 3,
31, 254, 192, 146, 80, 16, 0, 254, 185, 9, 0, 0, 121, 13, 80, 201, 204, 1, 2, 175, 204,
17, 76, 209, 65, 168, 87, 25, 68, 221, 164, 155, 244, 67, 26, 233, 149, 144, 3

The second data stream includes 27 bytes ($216/8 = 27$) denoting 216 mask bits
associated with 216 data elements of the subsequent data blocks (entropy = 117.41
25 bits \approx 15 bytes), and is represented as follows:

0, 0, 12, 2, 0, 48, 15, 0, 0, 130, 0, 0, 12, 3, 0, 128, 32, 0, 0, 195, 0, 0, 32, 8, 0, 192,
48

30 The third data stream includes four reference symbols indicating corresponding
reference data blocks for the subsequent data blocks (entropy = 0 bits \approx 0 bytes),
and is represented as follows:

1, 1, 1, 1
35

These reference symbols indicate that the first data block is a corresponding
reference data block for a second data block, the second data block is a
corresponding reference data block for a third data block, and so on. Herein, the

reference symbols act as relative pointers that indicate positions of the data blocks relative to their corresponding reference data blocks or data packets.

5 As the reference symbols are sorted according to when they occur chronologically, the entropy produced by the third data stream is reduced considerably. In an alternative implementation, the reference symbols are optionally inserted into a table as they occur chronologically into an adaptive order. In such a case, the third data stream can be delta-coded efficiently.

10 In an event that it is desirable to refer only to a previous data block or data packet, namely a data block or data packet that arrives just before a given data block or data packet, the third data stream need not be written or transmitted in the encoded data (E2).

15 The aforementioned method of encoding is considerably more cost-efficient than known data de-duplication methods, because it is capable of:

- (i) finding partially duplicated? data blocks or data packets apart from fully duplicated? data blocks or data packets; and
- (ii) encoding only changed data elements in the encoded data (E2).

20

Writing or transmitting only the changed data elements in the encoded data (E2) reduces a time needed for processing the encoded data (E2), an amount of encoded bytes within the encoded data (E2) and an entropy [1,2] of the encoded data (E2) as compared to the input data (D1). Thus, a considerably high data compression ratio is
25 achieved as compared to the known data de-duplication methods.

When the input data (D1) is multi-dimensional data, an order in which data values are defined in data blocks is also an important property, pursuant to embodiments of the present disclosure. For illustration purposes only, there is now considered a two-
30 dimensional (2D) image data having 16x16 data values, which can be divided into 16 data blocks in two ways, namely a first case where 16 data blocks have 1x16 or 16x1 data values each and a second case where 16 data blocks have 4x4 data values each. It will be appreciated that multi-dimensional features, namely spatial correlation

The processing hardware of the encoder **10** then operates to encode the data values of the changed data elements, the mask bits and reference symbols into three data streams to provide the encoded data (E2), as elucidated below.

5 A first data stream includes quantized data values of 54 data elements of the first data block and quantized data values of 25 changed data elements in the subsequent data blocks, and is represented as follows:

10 0, 3, 10, 39, 45, 7, 0, 4, 60, 10, 10, 43, 2, 0, 17, 0, 0, 10, 30, 62, 16, 0, 29, 1, 51, 24,
15, 60, 48, 13, 43, 4, 4, 15, 8, 50, 48, 55, 47, 7, 45, 0, 7, 63, 48, 36, 20, 4, 0, 63, 46,
2, 0, 0, 3, 20, 50, 51, 0, 43, 51, 4, 19, 52, 16, 42, 21, 6, 17, 55, 41, 38, 61, 16, 6, 58,
37, 36, 0

A second data stream includes 27 bytes denoting 216 mask bits associated with 216
15 data elements of the subsequent data blocks, and is represented as follows:

0, 0, 8, 2, 0, 48, 14, 0, 0, 130, 0, 0, 12, 3, 0, 128, 32, 0, 0, 195, 0, 0, 32, 8, 0, 192, 48

A third data stream includes four reference symbols indicating corresponding
20 reference data blocks for the subsequent data blocks, and is represented as follows:

1, 1, 1, 1

When required, the processing hardware of the decoder **20** operates to decode the
25 encoded data (E2), namely the aforementioned three data streams, to generate the decoded data (D3). The decoded data (D3) so generated is represented as follows:

30 0, 12, 40, 156, 180, 28, 0, 16, 240, 40, 40, 172, 8, 0, 68, 0, 0, 40, 120, 248, 64, 0,
116, 4, 204, 96, 60, 240, 192, 52, 172, 16, 16, 60, 32, 200, 192, 220, 188, 28, 180, 0,
28, 252, 192, 144, 80, 16, 0, 252, 184, 8, 0, 0,

0, 12, 40, 156, 180, 28, 0, 16, 240, 40, 40, 172, 8, 0, 68, 0, 0, 40, 120, 12, 64, 0, 116,
4, 204, 80, 60, 240, 192, 52, 172, 16, 16, 60, 32, 200, 192, 220, 188, 28, 180, 0, 28,
252, 200, 204, 80, 16, 0, 0, 172, 204, 0, 0,

35 0, 12, 40, 156, 180, 28, 0, 16, 240, 40, 40, 172, 8, 0, 68, 0, 0, 40, 120, 16, 64, 0, 116,
4, 204, 76, 60, 240, 192, 52, 172, 16, 16, 60, 32, 200, 192, 220, 188, 28, 180, 0, 28,
252, 208, 64, 80, 16, 0, 0, 168, 84, 0, 0,

40 0, 12, 40, 156, 180, 28, 0, 16, 240, 40, 40, 172, 8, 0, 68, 0, 0, 40, 120, 24, 64, 0, 116,
4, 204, 68, 60, 240, 192, 52, 172, 16, 16, 60, 32, 200, 192, 220, 188, 28, 180, 0, 28,
252, 220, 164, 80, 16, 0, 0, 152, 244, 0, 0,

0, 12, 40, 156, 180, 28, 0, 16, 240, 40, 40, 172, 8, 0, 68, 0, 0, 40, 120, 64, 64, 0, 116,
4, 204, 24, 60, 240, 192, 52, 172, 16, 16, 60, 32, 200, 192, 220, 188, 28, 180, 0, 28,
252, 232, 148, 80, 16, 0, 0, 144, 0, 0, 0

5

Hereinabove, the five data blocks have been shown separated, and changed data elements of partial reoccurrences of data blocks have been underlined for the sake of clarity only.

10 The sum of squared error between the original data elements of the input data (D1) and the data elements of the decoded data (D3) is 535. This corresponds to some data loss between the input data (D1) and the decoded data (D3).

Defining Reference Symbols:

15

Optionally, a reference symbol '0' is used to indicate non-duplicate data blocks or data packets, namely data blocks or data packets that are not duplicates of any previous data block or data packet.

20 Optionally, when there are 'N' different reference data blocks or data packets, reference symbols '1' to 'N' are used to indicate partially duplicate data blocks or data packets, namely data blocks or data packets that are partial duplicates of their respective reference data blocks or data packets. Herein, 'N' is any positive integer greater than 1.

25

In the previous examples described in the foregoing, the reference symbol '0' was not used, as none of the data blocks was a non-duplicate data block or data packet. Instead, the reference symbol '1' was used, as each of the subsequent data blocks was a partial duplicate of its corresponding reference data block.

30

Moreover, when there are multiple reference data blocks or data packets available for a given data block or data packet, a reference data block or data packet can be selected from amongst the multiple reference data blocks or data packets. During selection, a distance of the reference data block or data packet relative to the given
35 data block or data packet is beneficially taken into account to find a probable

reference symbol with a lower value, without compromising on a match between the selected reference data block or data packet and the given data block or data packet.

5 Optionally, when the input data (D1) is large and/or there is a large amount of redundancy in the input data (D1), separate reference symbols are used for fully duplicate data blocks or data packets, namely data blocks or data packets that are exact duplicates of their respective reference data blocks or data packets.

10 In one implementation of the encoder **10**, when there are 'N' different reference data blocks or data packets, the reference symbols are optionally defined as follows:

- (i) the reference symbol '0' is used to indicate non-duplicate data blocks or data packets;
- (ii) the reference symbols '1' to 'N' are used to indicate partially duplicate data blocks or data packets; and
- 15 (iii) reference symbols '1+N' to 'N+N' are used to indicate fully duplicate data blocks or data packets.

For illustration purposes herein, there will now be considered an example wherein four reference data blocks are identified in the input data (D1). These four reference data blocks are assigned reference symbols as follows:

- reference symbol '1' to a first reference data block;
- reference symbol '2' to a second reference data block;
- reference symbol '3' to a third reference data block; and
- reference symbol '4' to a fourth reference data block.

25 In this example, value of 'N' is four ($N = 4$).

Now, if a fifth data block in the input data (D1) is a partial duplicate of the second reference data block, the fifth data block is represented by using the reference symbol '2'. If a sixth data block in the input data (D1) is a full duplicate of the second reference data block, the sixth data block is represented by using the reference symbol '6', namely '2+N'.

In an alternative implementation, a one-bit symbol is optionally used to indicate whether a given data block or data packet is a full duplicate or a partial duplicate. The

one-bit symbol is used in addition to a reference symbol for the given data block or data packet. Herein, the reference symbol indicates a corresponding reference data block or data packet for the given data block or data packet, while the one-bit symbol indicates whether the given data block or data packet is a full duplicate or a partial duplicate of the corresponding reference data block or data packet. The one-bit symbol has two values, namely '0' and '1'. For example, the value '0' of the one-bit symbol can be used to indicate a partial duplicate, while the value '1' of the one-bit symbol can be used to indicate a full duplicate, or vice versa.

10 In yet other alternative implementations, the partially duplicate data blocks or data packets can be defined by using block indexes, data indexes, motion vectors, database references, encoding methods, and so forth.

Optionally, when separate reference symbols are not used for fully duplicate data blocks or data packets, then mask bits associated with all unchanged data elements of the fully duplicate data blocks or data packets are set to a '0' value.

On the other hand, when separate reference symbols are used to indicate fully duplicate data blocks or data packets, the fully duplicate data blocks or data packets do not need mask bits. Likewise, when separate reference symbols are used to indicate non-duplicate data blocks or data packets, the non-duplicate data blocks or data packets do not need mask bits.

Moreover, optionally, the mask bits are encoded by using a database, as described in patent application GB 1222240.2, US 13/715,405, hereby incorporated by reference. When there is a high probability that the mask bits reoccur, the data compression ratio is susceptible to being improved by delivering a reference to the mask bits, as compared to entropy-encoding the mask bits as such.

30 Next, embodiments of the present disclosure will be further described with reference to the drawings, namely FIG. 2 to FIG. 5B.

FIG. 2 is an illustration of steps of a method of encoding input data (D1) to generate corresponding encoded data (E2), in accordance with an embodiment of the present

disclosure. The method is depicted as a collection of steps in a logical flow diagram, which represents a sequence of steps that can be implemented in hardware, software, or a combination thereof.

5 At a step **102**, at least partial reoccurrences of data blocks or data packets within the input data (D1) are determined.

At a step **104**, unchanged and changed data blocks or data packets are encoded by employing at least one reference symbol and a plurality of mask bits. As described
10 earlier, the at least one reference symbol is employed to indicate at least partial reoccurrences of mutually similar data blocks or data packets within the input data (D1). Additionally, the plurality of mask bits are employed to indicate changed and unchanged data elements of partial reoccurrences of data blocks or data packets within the input data (D1).

15

In accordance with the step **104**, the at least one reference symbol, the plurality of mask bits and the data values of the changed data elements are encoded into a plurality of data streams, as described earlier.

20 An encoding processing of the steps **102** and **104** has been described in conjunction with FIGs. 3A and 3B.

Next, at a step **106**, the plurality of data streams are entropy-encoded to generate the encoded data (E2).

25 The steps **102** to **106** are only illustrative and other alternatives can also be provided where one or more steps are added, one or more steps are removed, or one or more steps are provided in a different sequence without departing from the scope of the claims herein.

FIGs. 3A and 3B collectively are an illustration of steps of the encoding processing, in
30 accordance with an embodiment of the present disclosure.

At a step **202**, a given data frame/view/channel of the input data (D1) is read to determine a most optimal size for data blocks or data packets, as described earlier.

In accordance with the step **202**, the given data frame/view/channel is split into data blocks or data packets as per the most optimal size for the data blocks or data packets.

5

At a step **204**, the data blocks or data packets are read to conduct a search for their corresponding reference data blocks or data packets.

Next, at a step **206**, for a given data block or data packet in the given data frame/view/channel, it is determined whether or not the given data block or data packet is a duplicate of a reference data block or data packet.

If, at the step **206**, it is determined that the given data block or data packet is not a duplicate, a step **208** is performed. At the step **208**, a “no duplicate” reference symbol is written for the given data block or data packet. In one example, the “no duplicate” reference symbol is defined as a reference symbol ‘0’. Additionally, all data values of the given data block or data packet are encoded into the encoded data (E2).

If, at the step **206**, it is determined that the given data block or data packet is a duplicate of a reference data block or data packet, a step **210** is performed. At the step **210**, it is determined whether the given data block or data packet is a full duplicate or a partial duplicate of the reference data block or data packet. When the lossy mode of operation is used, the step **210** is performed as per a quality level set for the lossy mode of operation.

25

If, at the step **210**, it is determined that the given data block or data packet is a partial duplicate, a step **212** is performed. At the step **212**, a reference symbol indicating the reference data block or data packet is written for the given data block or data packet. The reference symbol is employed as a pointer indicating a position of the reference data block or data packet relative to the given data block or data packet. In one example, the reference symbol is selected from the reference symbols ‘1’ to ‘N’, when there are ‘N’ different reference data blocks or data packets. Additionally, data values of changed data elements of the given data block or data packet and their associated mask bits are encoded into the encoded data (E2).

30

If, at the step **210**, it is determined that the given data block or data packet is a full duplicate, a step **214** is performed. At the step **214**, a reference symbol indicating the reference data block or data packet is written for the given data block or data packet.

5 In one example, the reference symbol is selected from the reference symbols '1+N' to 'N+N', when there are 'N' different reference data blocks or data packets. In another example, a one-bit symbol indicating a full duplicate is written in addition to the reference symbol.

10 A step **216** follows the steps **208**, **212** and **214**. At the step **216**, it is determined whether or not a next data block or data packet exists in the given data frame/view/channel. If it is determined that a next data block or data packet exists, the encoding processing restarts at the step **204**. Otherwise, if it is determined that no next data block or data packet exists in the given data frame/view/channel, a step
15 **218** is performed.

At the step **218**, it is determined whether or not a next data frame/view/channel exists in the input data (D1). If it is determined that a next data frame/view/channel exists, the encoding processing restarts at the step **202**. Otherwise, if it is determined that
20 no next data frame/view/channel exists in the input data (D1), the encoding processing stops.

Moreover, an amount of background memory allocated for the encoding processing is only as large as an amount of data elements in a current data block or data packet multiplied with the number of possible references (namely block or packet accurate
25 reference indexing) or summed with the number of possible references minus one (namely data value accurate reference indexing). In minimum, it is a memory of one data block or packet. Moreover, a result of the encoding processing, namely, the encoded data (E2), can be written or transmitted directly into an original memory.
30 This means that no separate transfer memories are required. Therefore, the method is capable of functioning as an in-place operation, and is highly cost-effective. The method, for example, can be used in inexpensive consumer electronic media products, such as smart phones, MP3 players, tablet computers, televisions, audio high-fidelity ("hifi") equipments, e-books and similar.

The steps **202** to **218** are only illustrative and other alternatives can also be provided where one or more steps are added, one or more steps are removed, or one or more steps are provided in a different sequence without departing from the scope of the claims herein. For example, in an alternative implementation where separate reference symbols are not used for fully duplicate data blocks or data packets, the steps **210** and **214** are removed. Now, if, at the step **206**, it is determined that the given data block or data packet is a duplicate of a reference data block or data packet, the step **212** is performed instead of the step **210**.

10

Embodiments of the present disclosure provide a computer program product comprising a non-transitory (namely non-transient) computer-readable storage medium having computer-readable instructions stored thereon, the computer-readable instructions being executable by a computerized device comprising processing hardware to execute the method as described in conjunction with FIGs. 2 and 3A-B. The computer-readable instructions are optionally downloadable from a software application store, for example, from an “*App store*” to the computerized device.

15

20

FIG. 4 is an illustration of steps of a method of decoding encoded data (E2) to generate corresponding decoded data (D3), in accordance with an embodiment of the present disclosure. The method is depicted as a collection of steps in a logical flow diagram, which represents a sequence of steps that can be implemented in hardware, software, or a combination thereof.

25

At a step **302**, the encoded data (E2) is entropy-decoded to provide a plurality of data streams. As described earlier, the plurality of data streams include one or more of:

30

- (i) a first data stream that includes data values of at least one reference data block and/or data packet and data values of changed data elements of subsequent data blocks;
- (ii) a second data stream that includes a plurality of mask bits; and/or
- (iii) a third data stream that includes at least one reference symbol.

At a step **304**, unchanged and changed data blocks are decoded from the plurality of data streams. In accordance with the step **304**, the at least one reference symbol, the plurality of mask bits and the data values of the changed data elements are decoded to generate data for at least partial reoccurrences of data blocks or data packets, and
5 to generate data for changed data elements of partial reoccurrences of data blocks or data packets.

A decoding processing of the step **304** has been described in conjunction with FIGs. 5A and 5B.

10

Next, at a step **306**, the data generated for the at least partial reoccurrences of data blocks or data packets and the data generated for the changed data elements of the partial reoccurrences of data blocks or data packets are assembled to generate the decoded data (D3).

15 The steps **302** to **306** are only illustrative and other alternatives can also be provided where one or more steps are added, one or more steps are removed, or one or more steps are provided in a different sequence without departing from the scope of the claims herein.

FIGs. 5A and 5B collectively are an illustration of steps of the decoding processing, in
20 accordance with an embodiment of the present disclosure.

At a step **402**, a given reference symbol is read from the third data stream provided in the encoded data (E2).

25 At a step **404**, it is determined whether or not the given reference symbol is a “no duplicate” reference symbol. In other words, it is determined whether or not the given reference symbol corresponds to a non-duplicate data block or data packet.

If, at the step **404**, it is determined that the given reference symbol is a “no duplicate” reference symbol, a step **406** is performed. At the step **406**, all data values of the
30 non-duplicate data block or data packet are decoded to generate data for the non-duplicate data block or data packet.

If, at the step **404**, it is determined that the given reference symbol is not a “*no duplicate*” reference symbol, a step **408** is performed. At the step **408**, it is determined whether or not the given reference symbol is a “*full duplicate*” reference symbol. In other words, it is determined whether or not the given reference symbol
5 corresponds to a fully duplicate data block or data packet.

If, at the step **408**, it is determined that the given reference symbol is not a “*full duplicate*” reference symbol, a step **410** is performed. At the step **410**, mask bits associated with data elements of a partially duplicate data block or data packet are
10 checked to decode data values of changed data elements of the partially duplicate data block or data packet. Additionally, data values of unchanged elements are taken from a reference data block or data packet to which the given reference symbol points. In accordance with the step **410**, the data values of the unchanged elements are combined with the data values of the changed data elements to generate data for
15 the partially duplicate data block or data packet.

If, at the step **408**, it is determined that the given reference symbol is a “*full duplicate*” reference symbol, a step **412** is performed. At the step **412**, data values of unchanged elements are taken from the reference data block to which the given
20 reference symbol points. The data values of the unchanged elements are set to generate data for a fully duplicate data block or data packet.

A step **414** follows the steps **406**, **410** and **412**. At the step **414**, it is determined whether or not a next reference symbol exists in the third data stream. If it is
25 determined that a next reference symbol exists, the decoding processing restarts at the step **402**.

Otherwise, if it is determined that no next reference symbol exists, a step **416** is performed. At the step **416**, the data generated for the data blocks or data packets at
30 the steps **406**, **410** and **412** is assembled to generate the decoded data (D3).

It will be appreciated that it is possible that a channel, a view or a frame is updated separately whenever decoding such a portion of the data is completed, irrespective of whether or not all data is completed.

The steps **402** to **416** are only illustrative and other alternatives can also be provided where one or more steps are added, one or more steps are removed, or one or more steps are provided in a different sequence without departing from the scope of the claims herein.

Embodiments of the present disclosure provide a computer program product comprising a non-transitory (namely non-transient) computer-readable storage medium having computer-readable instructions stored thereon, the computer-readable instructions being executable by a computerized device comprising processing hardware to execute the method as described in conjunction with FIGs. 4 and 5A-B. The computer-readable instructions are optionally downloadable from a software application store, for example, from an “*App store*” to the computerized device.

Modifications to embodiments of the invention described in the foregoing are possible without departing from the scope of the invention as defined by the accompanying claims. Expressions such as “including”, “comprising”, “incorporating”, “consisting of”, “have”, “is” used to describe and claim the present invention are intended to be construed in a non-exclusive manner, namely allowing for items, components or elements not explicitly described also to be present. Reference to the singular is also to be construed to relate to the plural. Numerals included within parentheses in the accompanying claims are intended to assist understanding of the claims and should not be construed in any way to limit subject matter claimed by these claims.

25

APPENDIX

[1]	Entropy (information theory) - Wikipedia, the free encyclopedia (accessed September 27, 2013). URL:	http://en.wikipedia.org/wiki/Entropy_%28information_theory%29
[2]	Shannon, Claude E. (1948) (accessed November 28, 2012) A Mathematical Theory of Communication. URL:	http://cm.bell-labs.com/cm/ms/what/shannonday/shannon1948.pdf
[3]	Lossless compression - Wikipedia, the free encyclopedia (accessed September 27, 2013). URL:	http://en.wikipedia.org/wiki/Lossless_compression
[4]	Lossy compression - Wikipedia, the free encyclopedia (accessed September 27, 2013). URL:	http://en.wikipedia.org/wiki/Lossy_compression
[5]	Data deduplication - Wikipedia, the free encyclopedia (accessed September 27, 2013). URL:	http://en.wikipedia.org/wiki/Data_deduplication
[6]	Hypertext Transfer Protocol -- HTTP/1.1 (accessed September 27, 2013). URL:	http://www.w3.org/Protocols/rfc2616/rfc2616.html
[7]	Real-Time Messaging Protocol (RTMP) specification Adobe Developer Connection (accessed September 27, 2013). URL:	http://www.adobe.com/devnet/rtmp.html
[8]	Windows Azure: Microsoft's Cloud Platform Cloud Hosting Cloud Services (accessed September 27, 2013). URL:	http://www.windowsazure.com/en-us/
[9]	Moore's law - Wikipedia, the free encyclopedia (accessed September 27, 2013). URL:	http://en.wikipedia.org/wiki/Moore%27s_law

CLAIMS

We claim:

5

1. An encoder for encoding input data (D1) to generate corresponding encoded data (E2), wherein the encoder includes processing hardware for processing the input data (D1), characterized in that:

10

(a) the processing hardware is operable to determine at least partial reoccurrences of data blocks or data packets within the input data (D1);

(b) the processing hardware is operable to employ at least one reference symbol to relate reoccurrences of mutually similar data blocks or data packets within the input data (D1);

15

(c) the processing hardware is operable to employ a plurality of mask bits to indicate changed and unchanged data elements of partial reoccurrences of data blocks or data packets within the input data (D1); and

(d) the processing hardware is operable to encode the at least one reference symbol, the plurality of mask bits and data values of changed data elements into the encoded data (E2).

20

2. The encoder as claimed in claim 1, characterized in that the processing hardware is operable to represent one or more unchanged data elements of a given data block or data packet by using one or more values indicative of no change, wherein the one or more values are different to those present in the input data (D1).

25

3. The encoder as claimed in claim 1, characterized in that the processing hardware is operable to employ one or more pointers for indicating one or more at least partial reoccurrences of data blocks or data packets relative to a corresponding reference data block or data packet.

30

4. The encoder as claimed in claim 3, characterized in that the one or more pointers are one or more relative pointers.

5. The encoder as claimed in claim 1, characterized in that the processing hardware is operable to encode the at least one reference symbol, the plurality of mask bits and the data values of the changed data elements into a plurality of data streams to provide the encoded data (E2).

5

6. The encoder as claimed in claim 1, characterized in that the processing hardware is operable to encode the input data (D1) provided as at least one of: one-dimensional data, multi-dimensional data, audio data, image data, video data, sensor data, text data, binary data, medical data.

10

7. The encoder as claimed in claim 1, characterized in that the encoder includes an additional encoding unit for encoding at least a portion of the at least one reference symbol, the plurality of mask bits and the data values of the changed data elements into the encoded data (E2), wherein the additional encoding unit is operable to employ at least one of: entropy modifying encoding, delta encoding, ODelta encoding, range encoding, Run Length Encoding (RLE), Split RLE (SRLE), interpolation encoding.

15

8. The encoder as claimed in claim 1, characterized in that the processing hardware is operable to determine a most optimal size for the data blocks or data packets when processing the input data (D1), and to provide, within the encoded data (E2), information indicative of the most optimal size for the data blocks or data packets.

20

9. A method of encoding input data (D1) to generate corresponding encoded data (E2), wherein the method includes processing the input data (D1), characterized in that the method includes:

25

(a) determining at least partial reoccurrences of data blocks or data packets within the input data (D1);

30

(b) employing at least one reference symbol to relate reoccurrences of mutually similar data blocks or data packets within the input data (D1);

(c) employing a plurality of mask bits to indicate changed and unchanged data elements of partial reoccurrences of data blocks or data packets within the input data (D1); and

(d) encoding the at least one reference symbol, the plurality of mask bits and data values of changed data elements into the encoded data (E2).

10. The method as claimed in claim 9, characterized in that the method includes
5 representing one or more unchanged data elements of a given data block or data packet by using one or more values indicative of no change, wherein the one or more values are different to those present in the input data (D1).

11. The method as claimed in claim 9, characterized in that the method includes
10 employing one or more pointers for indicating one or more at least partial reoccurrences of data blocks or data packets relative to a corresponding reference data block or data packet.

12. The method as claimed in claim 11, characterized in that the one or more
15 pointers are one or more relative pointers.

13. The method as claimed in claim 9, characterized in that the method includes
encoding the at least one reference symbol, the plurality of mask bits and the data
values of the changed data elements into a plurality of data streams to provide the
20 encoded data (E2).

14. The method as claimed in claim 9, characterized in that the method includes
encoding the input data (D1) provided as at least one of: one-dimensional data, multi-
dimensional data, audio data, image data, video data, sensor data, text data, binary
25 data, medical data.

15. The method as claimed in claim 9, characterized in that the method includes:

(e) employing an additional encoding unit for encoding at least a portion of the at
least one reference symbol, the plurality of mask bits and the data values of
30 the changed data elements into the encoded data (E2); and

(f) arranging for the additional encoding unit to employ at least one of: entropy
modifying encoding, delta encoding, ODelta encoding, range encoding, Run
Length Encoding (RLE), Split RLE (SRLE), interpolation encoding.

16. The method as claimed in claim 9, characterized in that the method includes:
(g) determining a most optimal size for the data blocks or data packets when processing the input data (D1); and
(h) providing, within the encoded data (E2), information indicative of the most optimal size for the data blocks or data packets.

5

17. A decoder for decoding encoded data (E2) to generate corresponding decoded data (D3), wherein the decoder includes processing hardware for processing the encoded data (E2), characterized in that:

- 10 (a) the processing hardware is operable to decode the encoded data (E2) to identify at least one reference symbol, a plurality of mask bits and data values of changed data elements;
- (b) the processing hardware is operable to employ the at least one reference symbol to generate data for at least partial reoccurrences of data blocks or data packets within the encoded data (E2);
- 15 (c) the processing hardware is operable to employ the plurality of mask bits to generate data for changed data elements of partial reoccurrences of data blocks or data packets within the encoded data (E2); and
- (d) the processing hardware is operable to assemble the data generated for the at least partial reoccurrences of data blocks or data packets and the data generated for the changed data elements of the partial reoccurrences of data blocks or data packets, to generate corresponding decoded data (D3).

20

18. The decoder as claimed in claim 17, characterized in that the processing hardware is operable to decode one or more unchanged data elements of a given data block or data packet from one or more values indicative of no change, wherein the one or more values are different to those present in the decoded data (D3).

25

19. The decoder as claimed in claim 17, characterized in that the processing hardware is operable to decode the encoded data (E2) to identify one or more pointers indicating one or more at least partial reoccurrences of data blocks or data packets relative to a corresponding reference data packet or data block.

30

20. The decoder as claimed in claim 19, characterized in that the one or more pointers are one or more relative pointers.

21. The decoder as claimed in claim 17, characterized in that the processing hardware is operable to decode the at least one reference symbol, the plurality of mask bits and the data values of the changed data elements from a plurality of data streams provided within the encoded data (E2).

22. The decoder as claimed in claim 17, characterized in that the decoded data (D3) is provided as at least one of: one-dimensional data, multi-dimensional data, audio data, image data, video data, sensor data, text data, binary data, medical data.

23. The decoder as claimed in claim 17, characterized in that the decoder includes an additional decoding unit for decoding at least a portion of the at least one reference symbol, the plurality of mask bits and the data values of the changed data elements from the encoded data (E2), wherein the additional decoding unit is operable to employ at least one of: entropy modifying decoding, delta decoding, ODelta decoding, range decoding, run length decoding, split run length decoding, interpolation decoding.

20

24. The decoder as claimed in claim 17, characterized in that the processing hardware is operable to receive, within the encoded data (E2), information indicative of a size of the data blocks or data packets.

25. A method of decoding encoded data (E2) to generate corresponding decoded data (D3), wherein the method includes processing the encoded data (E2), characterized in that the method includes:

- (a) decoding the encoded data (E2) to identify at least one reference symbol, a plurality of mask bits and data values of changed data elements;
- (b) employing the at least one reference symbol to generate data for at least partial reoccurrences of data blocks or data packets within the encoded data (E2);

30

(c) employing the plurality of mask bits to generate data for changed data elements of partial reoccurrences of data blocks or data packets within the encoded data (E2); and

5 (d) assembling the data generated for the at least partial reoccurrences of data blocks or data packets and the data generated for the changed data elements of the partial reoccurrences of data blocks or data packets, to generate corresponding decoded data (D3).

10 26. The method as claimed in claim 25, characterized in that the method includes decoding one or more unchanged data elements of a given data block or data packet from one or more values indicative of no change, wherein the one or more values are different to those present in the decoded data (D3).

15 27. The method as claimed in claim 25, characterized in that the method includes decoding the encoded data (E2) to identify one or more pointers indicating one or more at least partial reoccurrences of data blocks or data packets relative to a corresponding reference data packet or data block.

20 28. The method as claimed in claim 27, characterized in that the one or more pointers are one or more relative pointers.

25 29. The method as claimed in claim 25, characterized in that the method includes decoding the at least one reference symbol, the plurality of mask bits and the data values of the changed data elements from a plurality of data streams provided within the encoded data (E2).

30 30. The method as claimed in claim 25, characterized in that the decoded data (D3) is provided as at least one of: one-dimensional data, multi-dimensional data, audio data, image data, video data, sensor data, text data, binary data.

31. The method as claimed in claim 25, characterized in that the method includes:
(e) employing an additional decoding unit for decoding at least a portion of the at least one reference symbol, the plurality of mask bits and the data values of the changed data elements from the encoded data (E2); and

(f) arranging for the additional decoding unit to employ at least one of: entropy modifying decoding, delta decoding, ODelta decoding, range decoding, run length decoding, split run length decoding, interpolation decoding.

5 32. The method as claimed in claim 25, characterized in that the method includes receiving, within the encoded data (E2), information indicative of a size of the data blocks or data packets.

10 33. A computer program product comprising a non-transitory computer-readable storage medium having computer-readable instructions stored thereon, the computer-readable instructions being executable by a computerized device comprising processing hardware to execute a method as claimed in claim 9 or claim 25.

15 34. A codec including at least one encoder as claimed in claim 1 for encoding input data (D1) to generate corresponding encoded data (E2), and at least one decoder as claimed in claim 17 for decoding the encoded data (E2) to generate corresponding decoded data (D3).

Amendments to the Claims have been filed as follows

AMENDED CLAIMS

We claim:

1. An encoder for encoding input data (D1) to generate corresponding encoded data (E2), characterized in that the encoder includes data processing hardware which is operable:
 - (a) to determine at least partial reoccurrences of data blocks or data packets within the input data (D1), wherein the data blocks or data packets include a plurality of bytes;
 - (b) to employ at least one reference symbol to relate reoccurrences of mutually similar data blocks or data packets within the input data (D1), and/or to indicate whether or not there are reoccurrences of mutually similar data blocks or data packets within the input data (D1);
 - (c) to employ a plurality of change symbols to indicate changed and unchanged data elements of partial reoccurrences of data blocks or data packets within the input data (D1) and a change of data values of changed data elements; and
 - (d) to encode the at least one reference symbol, and the plurality of change symbols into the encoded data (E2).
2. The encoder as claimed in claim 1, characterized in that the processing hardware is operable to represent one or more unchanged data elements of a given data block or data packet by using one or more values indicative of no change, wherein the one or more values are different to those present in the input data (D1).
3. The encoder as claimed in claim 1, characterized in that the processing hardware is operable to encode the at least one reference symbol, the plurality of change symbols and the data values of the changed data elements into a plurality of data streams to provide the encoded data (E2).
4. The encoder as claimed in claim 1, characterized in that the processing hardware is operable to encode the input data (D1) provided as at least one of: one-

dimensional data, multi-dimensional data, audio data, image data, video data, sensor data, text data, binary data, medical data.

5. The encoder as claimed in claim 1, characterized in that the encoder includes an additional encoding unit for encoding at least a portion of the at least one reference symbol, the plurality of change symbols and the data values of the changed data elements into the encoded data (E2), wherein the additional encoding unit is operable to employ at least one of: entropy modifying encoding, delta encoding, ODelta encoding, range encoding, Run Length Encoding (RLE), Split RLE (SRLE), interpolation encoding.

6. The encoder as claimed in claim 1, characterized in that the processing hardware is operable to determine a most optimal size for the data blocks or data packets when processing the input data (D1), and to provide, within the encoded data (E2), information indicative of the most optimal size for the data blocks or data packets.

7. A method of encoding input data (D1) to generate corresponding encoded data (E2), wherein the method includes processing the input data (D1), characterized in that the method includes:

- (a) determining at least partial reoccurrences of data blocks or data packets within the input data (D1), wherein the data blocks or data packets each include a plurality of bytes;
- (b) employing at least one reference symbol to relate reoccurrences of mutually similar data blocks or data packets within the input data (D1), and/or to indicate whether or not there are reoccurrences of mutually similar data blocks or data packets within the input data (D1);
- (c) employing a plurality of change symbols to indicate changed and unchanged data elements of partial reoccurrences of data blocks or data packets within the input data (D1) and a change of data values of changed data elements; and
- (d) encoding the at least one reference symbol, and the plurality of change symbols into the encoded data (E2).

8. The method as claimed in claim 7, characterized in that the method includes representing one or more unchanged data elements of a given data block or data packet by using one or more values indicative of no change, wherein the one or more values are different to those present in the input data (D1).

9. The method as claimed in claim 7, characterized in that the method includes encoding the at least one reference symbol, the plurality of change symbols and the data values of the changed data elements into a plurality of data streams to provide the encoded data (E2).

10. The method as claimed in claim 7, characterized in that the method includes encoding the input data (D1) provided as at least one of: one-dimensional data, multi-dimensional data, audio data, image data, video data, sensor data, text data, binary data, medical data.

11. The method as claimed in claim 7, characterized in that the method includes:

- (e) employing an additional encoding unit for encoding at least a portion of the at least one reference symbol, the plurality of change symbols and the data values of the changed data elements into the encoded data (E2); and
- (f) arranging for the additional encoding unit to employ at least one of: entropy modifying encoding, delta encoding, ODelta encoding, range encoding, Run Length Encoding (RLE), Split RLE (SRLE), interpolation encoding.

12. The method as claimed in claim 7, characterized in that the method includes:

- (g) determining a most optimal size for the data blocks or data packets when processing the input data (D1); and
- (h) providing, within the encoded data (E2), information indicative of the most optimal size for the data blocks or data packets.

13. A decoder for decoding encoded data (E2) to generate corresponding decoded data (D3), wherein the decoder includes processing hardware for processing the encoded data (E2), characterized in that:

- (a) the processing hardware is operable to decode the encoded data (E2) to identify at least one reference symbol, and a plurality of change symbols;

- (b) the processing hardware is operable to employ the at least one reference symbol to generate data for at least partial reoccurrences of data blocks or data packets within the encoded data (E2);
- (c) the processing hardware is operable to employ the plurality of change symbols to generate data for changed data elements of partial reoccurrences of data blocks or data packets within the encoded data (E2); and
- (d) the processing hardware is operable to assemble the data generated for the at least partial reoccurrences of data blocks or data packets and the data generated for the changed data elements of the partial reoccurrences of data blocks or data packets, to generate corresponding decoded data (D3).

14. The decoder as claimed in claim 13, characterized in that the processing hardware is operable to decode one or more unchanged data elements of a given data block or data packet from one or more values indicative of no change, wherein the one or more values are different to those present in the decoded data (D3).

15. The decoder as claimed in claim 13, characterized in that the processing hardware is operable to decode the at least one reference symbol, the plurality of change symbols and the data values of the changed data elements from a plurality of data streams provided within the encoded data (E2).

16. The decoder as claimed in claim 13, characterized in that the decoded data (D3) is provided as at least one of: one-dimensional data, multi-dimensional data, audio data, image data, video data, sensor data, text data, binary data, medical data.

17. The decoder as claimed in claim 13, characterized in that the decoder includes an additional decoding unit for decoding at least a portion of the at least one reference symbol, the plurality of mask bits and the data values of the changed data elements from the encoded data (E2), wherein the additional decoding unit is operable to employ at least one of: entropy modifying decoding, delta decoding, ODelta decoding, range decoding, run length decoding, split run length decoding, interpolation decoding.

18. The decoder as claimed in claim 13, characterized in that the processing hardware is operable to receive, within the encoded data (E2), information indicative of a size of the data blocks or data packets.

19. A method of decoding encoded data (E2) to generate corresponding decoded data (D3), wherein the method includes processing the encoded data (E2), characterized in that the method includes:

- (a) decoding the encoded data (E2) to identify at least one reference symbol, and a plurality of change symbols;
- (b) employing the at least one reference symbol to generate data for at least partial reoccurrences of data blocks or data packets within the encoded data (E2);
- (c) employing the plurality of change symbols to generate data for changed data elements of partial reoccurrences of data blocks or data packets within the encoded data (E2); and
- (d) assembling the data generated for the at least partial reoccurrences of data blocks or data packets and the data generated for the changed data elements of the partial reoccurrences of data blocks or data packets, to generate corresponding decoded data (D3).

20. The method as claimed in claim 19, characterized in that the method includes decoding one or more unchanged data elements of a given data block or data packet from one or more values indicative of no change, wherein the one or more values are different to those present in the decoded data (D3).

21. The method as claimed in claim 19, characterized in that the method includes decoding the at least one reference symbol, the plurality of mask bits and the data values of the changed data elements from a plurality of data streams provided within the encoded data (E2).

22. The method as claimed in claim 19, characterized in that the decoded data (D3) is provided as at least one of: one-dimensional data, multi-dimensional data, audio data, image data, video data, sensor data, text data, binary data.

23. The method as claimed in claim 19, characterized in that the method includes:
- (e) employing an additional decoding unit for decoding at least a portion of the at least one reference symbol, the plurality of mask bits and the data values of the changed data elements from the encoded data (E2); and
 - (f) arranging for the additional decoding unit to employ at least one of: entropy modifying decoding, delta decoding, ODelta decoding, range decoding, run length decoding, split run length decoding, interpolation decoding.
24. The method as claimed in claim 19, characterized in that the method includes receiving, within the encoded data (E2), information indicative of a size of the data blocks or data packets.
25. A computer program product comprising a non-transitory computer-readable storage medium having computer-readable instructions stored thereon, the computer-readable instructions being executable by a computerized device comprising processing hardware to execute a method as claimed in claim 7 or claim 19.
31. A codec including at least one encoder as claimed in claim 1 for encoding input data (D1) to generate corresponding encoded data (E2), and at least one decoder as claimed in claim 13 for decoding the encoded data (E2) to generate corresponding decoded data (D3).



Application No: GB1411531.5

Examiner: Adam Tucker

Claims searched: 1-34

Date of search: 19 December 2014

Patents Act 1977: Search Report under Section 17

Documents considered to be relevant:

Category	Relevant to claims	Identity of document and passage or figure of particular relevance
X	1-7, 9-15 & 17-34	US 7643505 B1 (Colloff) See the whole document and in particular Figures 1A, 1C and 4A-H
A	-	EP 2359233 A1 (Data-Domain Inc.) See the whole document
A	-	US 2013/0315307 A1 (Karkkainen et al.) See the whole document
A	-	US 5434568 A (Moll) See the whole document
A	-	US 2010/0115137 A1 (Kim et al.) See e.g. the abstract and paragraphs 4, 7, 22 & 27
A	-	EP 2256934 A1 (Exagrid Systems Inc.) See the whole document and e.g. paragraphs 12 & 43

Categories:

X Document indicating lack of novelty or inventive step	A Document indicating technological background and/or state of the art.
Y Document indicating lack of inventive step if combined with one or more other documents of same category.	P Document published on or after the declared priority date but before the filing date of this invention.
& Member of the same patent family	E Patent document published on or after, but with priority date earlier than, the filing date of this application.

Field of Search:

Search of GB, EP, WO & US patent documents classified in the following areas of the UKC^X :

Worldwide search of patent documents classified in the following areas of the IPC

G06F; G06T; H03M; H04L; H04N

The following online and other databases have been used in the preparation of this search report

WPI, EPODOC, INSPEC, TXTE

**International Classification:**

Subclass	Subgroup	Valid From
H03M	0007/30	01/01/2006
G06F	0003/06	01/01/2006
G06F	0011/14	01/01/2006
G06F	0017/30	01/01/2006
H04L	0029/06	01/01/2006
H04N	0019/00	01/01/2014